

UNPACKED:
**UNESCO WORLD
HERITAGE SITE
NIRAYAMA
REVERBERATORY
FURNACES**

DISCOVER THE ENCHANTING
WORLD OF GEISHA

REJUVENATE IN IZUNAGAOKA ONSEN
THE HOT SPRINGS OF BEAUTY

EXQUISITE VARIETY OF
SEASONAL FRUITS

BREATHTAKING PANORAMIC
VIEW OF MT. FUJI



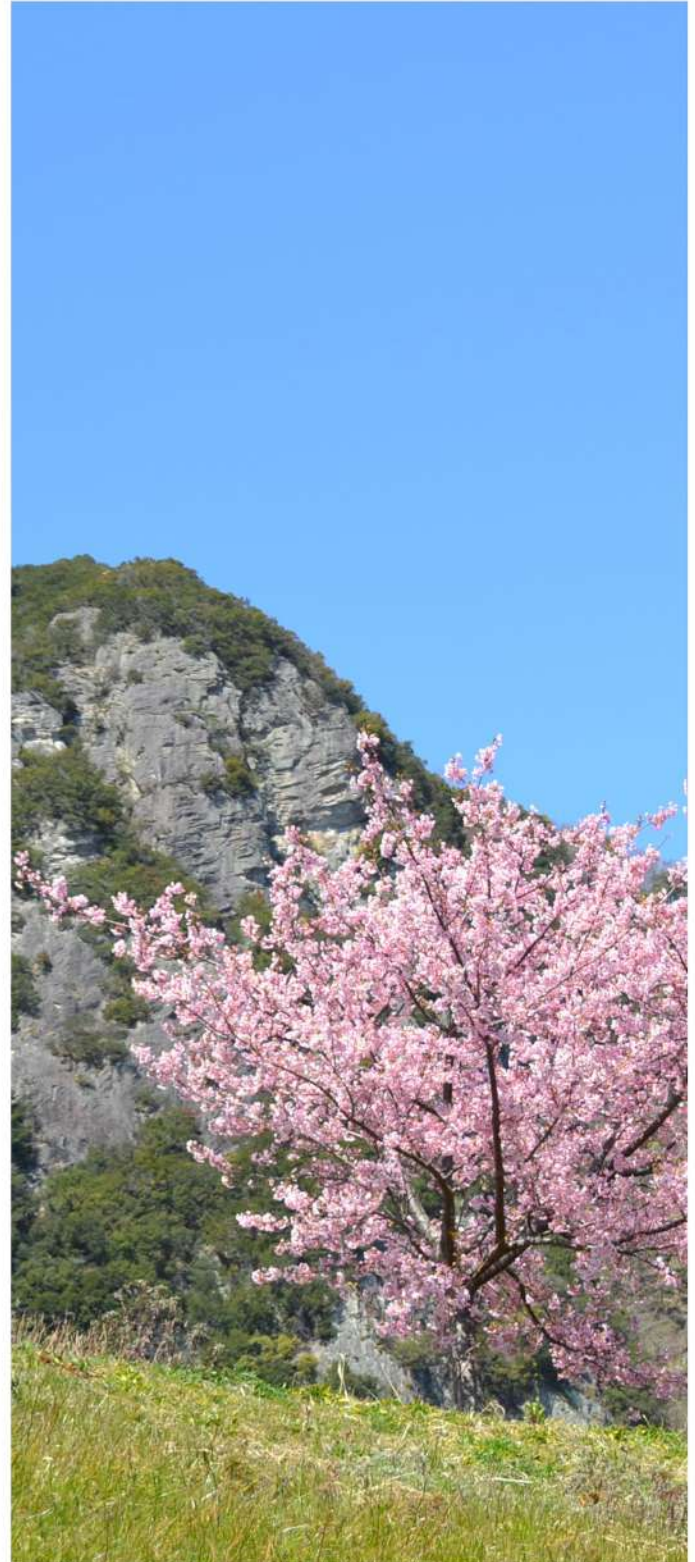
Izunokuni

The Heart of Izu



TABLE OF CONTENTS

WELCOME TO IZUNOKUNI	02
A short overview of the exquisite and uniqueness of Izunokuni	
DISCOVERING IZUNOKUNI	05
An exploration of Izunokuni's rich history, vibrant culture, and stunning natural landscape	
EXPERIENCING IZUNOKUNI	09
From lively festivals to calming onsen, Izunokuni offers a spectrum of activities for all	
GASTRONOMIC DELIGHTS	32
Indulge in Izunokuni's diverse tapestry of flavors	
RELAXING ACCOMMODATIONS	37
Embrace tranquility and unwind in Izunokuni's enchanting hospitality	
PRACTICAL INFORMATION	39
Transportation and essential travel tips for Izunokuni	
ADDITIONAL RESOURCES	44
Q&A and Simple Japanese Guide	





Nestled in the Izu Peninsula in eastern Shizuoka Prefecture, our city offers a unique blend of natural wonders and cultural heritage. Marvel at Mt. Fuji, unwind in our soothing hot springs, and explore the historical UNESCO World Heritage Centre designated Nirayama Reverberatory Furnaces. Enjoy our vibrant festivals, indulge in strawberry picking, and savor local culinary delights. Izunokuni is your gateway to an unforgettable Japanese experience.



UNIQUE AND EXQUISITE CHARACTERISTICS OF IZUNOKUNI

Scenic Beauty

Be captivated by the stunning views of Mt. Fuji and the lush Izu Peninsula.

Relaxing Hot Springs

Immerse yourself in our healing onsens, offering a tranquil retreat.

Historical Landmarks

Visit the UNESCO World Heritage Site, Nirayama Reverberatory Furnaces, a symbol of Japan's industrial heritage and other Nationally designated important cultural sites.

Strawberry Picking

Delight in hand-picking fresh strawberries, a fun activity for all ages.

Vibrant Festivals

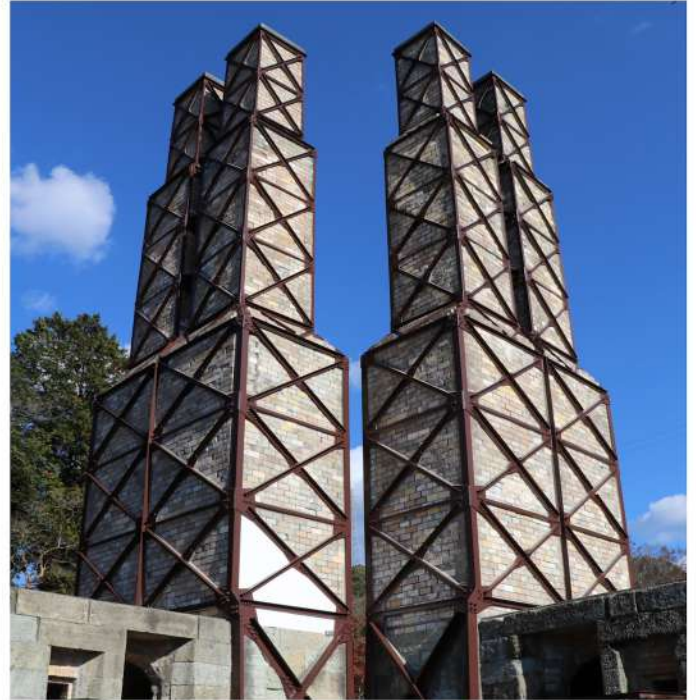
Experience the energy and color of our centuries-old traditional "Matsuri" (festival), celebrating our rich cultural heritage.

Panoramic Vistas

Enjoy the 360° breathtaking landscapes from the summit of Mt. Katsuragi via Ropeway.



Clockwise: Clockwise: Izu Panorama Park Ropeway; UNESCO World Heritage Site Nirayama Reverberatory Furnaces; Relaxing Onsen Hot Spring Accommodation; Vibrant Festivals with Fireworks.



DISCOVERING IZUNOKUNI



Izunokuni's Rich Historical Tapestry

Izunokuni's story begins in the Jomon period, showcasing its ancient roots. As part of the Suruga Province during the Nara and Heian periods, it flourished culturally.

The Kamakura period introduces a significant historical figure, Hojo Yoshitoki. As the second regent of the Kamakura shogunate, his era was pivotal in shaping Japan's feudal history, influencing regions like Izunokuni.

During the Edo era, Izunokuni's famed hot springs along the Tokaido road were a haven for travelers,

symbolizing a blend of rest and culture.

The Meiji Restoration marks a shift with the Nirayama Reverberatory Furnaces, representing Japan's leap into industrialization. Post-World War II developments brought modern touches while preserving historical charm.

Today, Izunokuni is a blend of ancient heritage and modernity, with each era, including that of Hojo Yoshitoki, contributing to its unique story.

Explore the timeless charm of Izunokuni, where history and legends intertwine!



EXPLORE HERITAGE, INDULGE IN LOCAL FLAVORS, AND EXPERIENCE IZUNOKUNI'S FESTIVE VIBES



Cultural Highlights and Landmarks

Nirayama Reverberatory Furnaces

Discover this World Heritage site, a significant landmark of Japan's industrial revolution in the 19th century.

Festivals and Events

Immerse yourself in the vibrant atmosphere of Izunokuni's traditional festivals, showcasing colorful parades, music, and dance.

Local Cuisine

Savor the flavors of Izunokuni's culinary delights, from fresh seafood to traditional dishes, highlighting the region's rich agricultural produce (see page 32 for more detail).





Natural Wonders and Scenic Spots

Majestic Views of Mt. Fuji

Experience awe-inspiring views of Japan's iconic mountain, offering breathtaking scenes and photo opportunities.

Izu Peninsula's Hot Springs

Unwind in the natural thermal baths scattered across Izunokuni, each offering a serene escape amidst nature.

Katsuragiya Ropeway

Journey to the skies and soak in the panoramic beauty of the region from this unique vantage point.

Izu Panorama Park

Explore this lush park, boasting vibrant floral displays, walking trails, and serene spots for relaxation.

Cycling Paths

Traverse the scenic cycling routes, an ideal way to be intimately connected with Izunokuni's natural beauty.

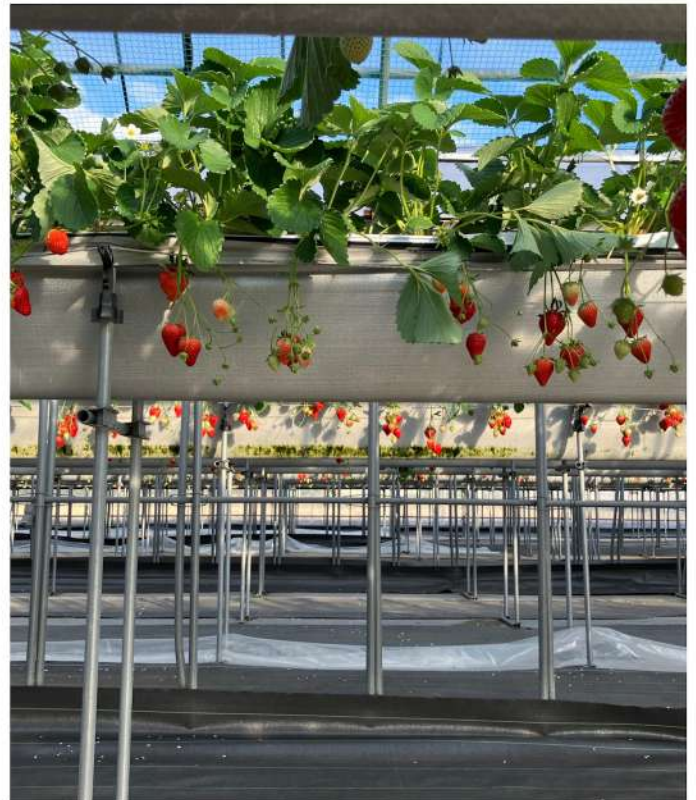
Strawberry Farms

Visit the local strawberry farms, where the verdant fields provide not just a delicious treat but also a picturesque rural landscape.

Outdoor Adventure Opportunities

Engage in various outdoor activities, from hiking in the green hills to exploring the serene valleys, offering a full immersion in the area's natural wonders.





Clockwise: Majestic View at the Summit of Mt. Joyama; Yumi Katsura Lover's Sanctuary at Izu Panorama Park; Delicious Strawberry Picking.



EXPERIENCING IZUNOKUNI



Immerse in Izunokuni's Year-Round Adventures: Culture, Nature, and Unforgettable Moments.



LOCAL FESTIVALS & EVENTS CALENDAR



JANUARY

Join the Nue Barai Festival in the Izunagaoka district in late January.



LOCAL FESTIVALS & EVENTS CALENDAR



FEBRUARY

Top: Enjoy the blooming Kawazu cherry blossoms throughout the city.

MID MARCH TO LATE MARCH

Bottom: Cherry blossoms bloom in the Ohito area, particularly the weeping cherry blossoms at Ryugen-in Temple.



LOCAL FESTIVALS & EVENTS CALENDAR



LATE MARCH TO EARLY APRIL

Top: Enjoy the cherry blossoms at Kanogawa Sakura Park in the Nirayama area.

Center: Visit Genjiyama Park in the Izunagaoka area to witness the beautiful cherry blossoms.

Bottom: Cherry blossoms also bloom in the Nirayama district, specifically at the Nirayama Reverberatory Furnaces.





LOCAL FESTIVALS & EVENTS CALENDAR



Experience the vibrant azalea blooming at Mt. Katsuragi in the Izunagaoka area

MID APRIL



Admire the blooming roses at Ikkuishi Rose Garden in the Nirayama area.

MID MAY



LOCAL FESTIVALS & EVENTS CALENDAR



Top Left: Hydrangeas in the Izunagaoka area, particularly at Mt. Genji and Mt. Katsuragi and along the Kano River.

Bottom Left: Hydrangeas in the Nirayama area.

EARLY JUNE

Enjoy the enchanting firefly viewing evening "Hotaru Kansho no Yube" in the Nirayama area.

MID JUNE

LOCAL FESTIVALS & EVENTS CALENDAR



JULY

Top Kayaking in the Majestic Kano River of Izunokuni!

FIRST SATURDAY AND SUNDAY OF JULY

Bottom: Join the Genji Ayame Festival in the Izunagaoka area.



LOCAL FESTIVALS & EVENTS CALENDAR



AUGUST

August 1st

Experience the “Kawakanjou” event in the Ohito district. Kawakanjou is a traditional ceremony to calm the water spirit of the Kano River and commemorate those lost at sea, featuring a procession of a straw-filled raft with a torch, accompanied by chanting and drumming, until the torch burns out near Kamimasumashi Shrine.

August 1st

Participate in the Kinyanne Ohito Summer Festival in the Ohito district.

August 3rd

Attend the Nirayama Kano River Festival and don't miss the Izunagaoka Onsen Fireworks in the Nirayama and Izunagaoka districts.



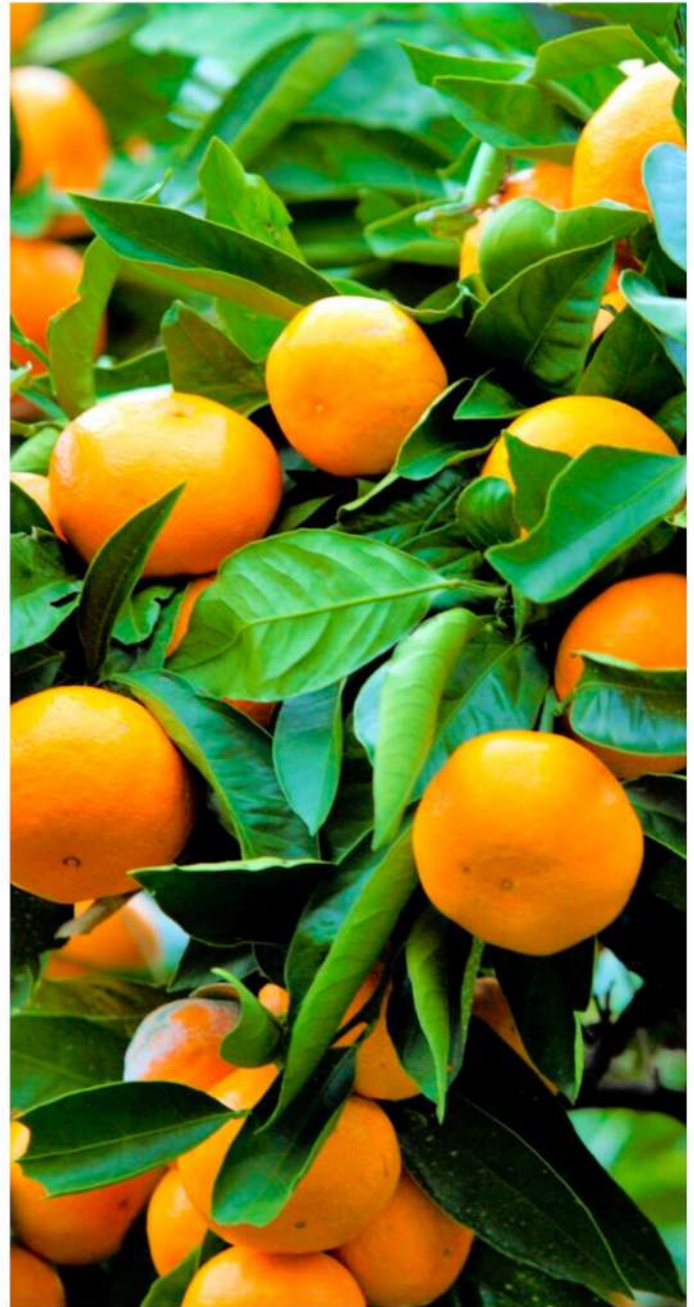


LOCAL FESTIVALS & EVENTS CALENDAR



Join the cycling event “Izu Kanogawa Guide Cycling” held over a few days on Saturdays and Sundays.

SEPTEMBER



Embark on a citrus-filled adventure as you indulge in the joy of orange picking amidst a breathtaking orchard boasting over 8000 vibrant oranges. This immersive experience promises an unforgettable day of family-friendly fun and delicious harvests.

OCTOBER



LOCAL FESTIVALS & EVENTS CALENDAR



Top and Bottom Left: Late November, experience the best time to see autumn leaves throughout the city.

NOVEMBER

Top Right: Don't miss the Tsurushi Kazari Hina (hanging doll) display in the Nirayama district.

Bottom Right: Visit the strawberry picking gardens in the Nirayama and Izunagaoka districts.

DECEMBER

**GET THE MOST UP-TO-
DATE INFORMATION OF
LOCAL FESTIVALS &
EVENTS CALENDAR FROM
THE WEBSITES BELOW**



TOURIST ATTRACTIONS

Find out what to see and where to go!



ANNUAL EVENT CALENDAR

Stay up to date on all the events year round!



ACTIVITIES AND EXCURSIONS FOR VISITORS

Are you looking for exciting activities and memorable experiences during your visit to Izunokuni City? Look no further! We offer a range of options that will immerse you in the rich cultural heritage and natural beauty of the region. From encountering Geisha to thrilling trekking adventures, kayaking and stand-up paddleboarding, cycling through historic trails, and horseback riding, there's something for everyone to enjoy.



ACTIVITIES AND EXCURSIONS FOR VISITORS



Discover the Enchanting World of Geisha

Immerse yourself in the captivating realm of Japanese historical culture with a visit to the renowned Izunagaoka Geisha School.

Unforgettable Moments with Geisha At the Izunagaoka Geisha Office, you'll have the opportunity to engage with well-trained Geisha who will enchant you with their mastery of traditional Japanese performing arts. Be captivated by their elegant dances and mesmerizing musical performances, and allow them to transport you to a world of grace and beauty.

Harmonious Sounds of Shamisen

Prepare to be enthralled as the Geisha from Izunagaoka Geisha Office skillfully play the enchanting melodies of the shamisen. This traditional three-stringed instrument will fill the air with its harmonious sounds, creating a truly immersive and unforgettable experience for you to cherish. Izunokuni City offers you the unique opportunity to delve into Japan's rich cultural heritage of Geisha Art like Ozashiki, through the artistry of Geisha.



ACTIVITIES AND EXCURSIONS FOR VISITORS



Experience Thrilling Trekking Adventures

Embark on an unforgettable journey through two famous trekking routes: Mt. Hottanjo and Mt. Katsuragi loop. Traverse picturesque landscapes and immerse yourself in the natural beauty of Izunokuni City. Whether you're a seasoned trekker or a beginner, there are trails suitable for all skill levels. Benefit from the expertise of knowledgeable local guides who will ensure a safe and enjoyable trekking experience.

Perfect for Beginners: Explore the Beauty of Mt. Joyama!

If you're new to trekking but eager to start your adventure in Izu, Izunokuni City has the perfect option for you! Discover the wonders of Mt. Joyama and its scenic loop, with a maximum trekking time of just 2 hours.



ACTIVITIES AND EXCURSIONS FOR VISITORS

Camping

Mobility Park Campsite

Experience a five-star auto campsite with unparalleled access from the Tokyo metropolitan area! Enjoy a range of amenities, including barrier-free sites designed for wheelchair accessibility, powder rooms, shower toilets, panoramic baths, shower rooms, and fully equipped kitchens—all available for free. This campground is also thoughtfully designed to be women-friendly, providing a welcoming and comfortable environment for all campers. Escape to the perfect blend of modern convenience and natural beauty just a stone's throw away from the capital!

<https://mobility-park.jp/>

Satsukigaoka Park Campsite

Escape to Satsukigaoka Park Camping Ground for a rejuvenating retreat where the charm of nature meets modern comfort. Whether you seek adventure, relaxation, or quality time with family and friends, this camping destination promises an enriching experience.



ACTIVITIES AND EXCURSIONS FOR VISITORS



Kayaking and Stand-Up Paddleboarding (SUP)

Whether you're a seasoned pro or trying it for the first time, our expert guides will ensure an unforgettable experience. Beginners can start with the "Chitose Bridge Course," a gentle route

that allows you to get a taste of the excitement while enjoying the tranquility of the surrounding river. Capture unforgettable moments of the majestic Mt. Fuji as you navigate through the picturesque waterways.





ACTIVITIES AND EXCURSIONS FOR VISITORS



Cycling

Discover the rich history of Izunokuni City as you embark on a cycling adventure through the footsteps of legendary figures, Minamoto no Yoritomo and Egawa Tarozaemon. Enjoy the gentle breeze and picturesque views as you follow the cycling course along the enchanting Kano River. Suitable for all skill levels, our cycling course caters to both experienced cyclists and casual riders.

ACTIVITIES AND EXCURSIONS FOR VISITORS

Horseback Riding

Experience the Charm of Yonaguni Horses at Izunokuni City Horse Plaza, where you can discover the joy of interacting with Yonaguni horses, native to Japan, at our newly opened Horse Plaza. Enjoy horse-drawn carriage rides around the beautiful surroundings, taking in the gentle pace of our Yonaguni (Japanese native horses). Whether you're a beginner or an experienced rider, our horseback riding experience is designed to provide fun and enjoyment for all.



ONSENS & ASHIYU



Izunagaoka Onsen

Located in Izunagaoka, Izunagaoka Onsen is renowned for its hot springs of beauty. Visitors can enjoy a variety of facilities, including rock saunas, hot spring baths, and relaxation areas. One visitor mentioned the unique experience of laying on rock beds in a mist sauna room, followed by a refreshing dip in the hot springs baths.



Discover the diverse array of offerings at our onsen accommodations, tailored to suit everyone, including your cherished family pet.



ONSENS & ASHIYU



Explore Other Surrounding Onsens

Kona Onsen

Located in the eastern part of Izunokuni City, surrounded by lush greenery and natural beauty.

Nirayama Onsen

Sits in the southern area of Izunokuni City, offering scenic vistas and historical allure.

Ohito Onsen

Lies in the northern region of Izunokuni City, amidst picturesque surroundings ideal for relaxation.



ONSENS & ASHIYU



Ashiyu (Foot bath)

In Izunokuni, travelers can unwind and rejuvenate at traditional foot baths known as "Ashiyu." These relaxing hot springs for the feet are nestled across the city, offering a serene break during exploration. Simply soak your feet in the mineral-

rich waters while enjoying the calming ambiance. These Ashiyu spots are not only refreshing but also reflect the local wellness culture. Whether after a day of sightseeing or to experience a piece of the local lifestyle, these foot baths are a delightful way to relax and recharge.



ONSENS & ASHIYU



Ashiyu Locations

Hime no Ashiyu

Located within the premises of Axis Katsuragi, this footbath is specifically designed to improve health and alleviate fatigue.

- Address: 255 Konana, Izunokuni, Shizuoka 410-2211, Japan (Axis Katsuragi within the Nagaoka Community Hall)
- Contact: 055-948-1480 (Tourism and Culture Division)
- Hours: 8:30 AM to 10:00 PM (No closing days)

Yurakkusu Park Ashiyu

Yurakkusu Park Ashiyu offers a relaxing experience within the park premises, complemented by a natural stone health promenade.

- Address: 613-1 Nagaoka, Izunokuni, Shizuoka 410-2323, Japan
- Contact: 055-948-2909 (Urban Planning Division)
- Hours: 7:00 AM to 10:00 PM (No closing days)

Konayumoto Park Ashiyu

Konayumoto Park Ashiyu provides a tranquil retreat within its premises, offering a serene atmosphere complemented by its natural stone foot bath facility.

- Address: 1199-3 Konana, Izunokuni, Shizuoka 410-2211, Japan
- Contact: 055-948-2909 (Urban Planning Division)
- Hours: 8:00 AM to 10:00 PM (No closing days)

Ogon no Yu

Ogon no Yu, situated in the heart of Izunokuni near the Ohito Station, offers a convenient foot bath experience for visitors, allowing relaxation while waiting or exploring the area.

- Address: 587 Ohito, Izunokuni, Shizuoka 410-2323, Japan (Opposite Ohito Station, Izu-Hakone Railway)
- Contact: 055-948-0304 (Izunokuni City Tourist Association)
- Hours: 24 hours (No closing days)
- Notes: No parking available

Deai no Yu

Named after Ayame Gozen and Minamoto no Yorimasa, this footbath features a heart-shaped pattern at its center, symbolizing the potential for a serendipitous encounter.

- Address: 1056-1 Nagaoka, Izunokuni, Shizuoka 410-2323, Japan
- Contact: 055-948-1301 (Komatsuya Hachinobo)
- Hours: 8:00 AM to 9:00 PM (No closing days)



GASTRONOMIC DELIGHTS



CULINARY EXPERIENCES AND LOCAL CUISINE

Embark on a culinary journey through Izunokuni, where the diverse tapestry of flavors awaits. Dive into a bowl of flavorful ramen or indulge in the delicate textures of soba noodles, where each bowl tells a vibrant tale of tradition and innovation. Delight in the ocean's bounty with fresh seafood, served in an array of tantalizing dishes. And don't miss the seasonal fruits, vibrant with natural sweetness, alongside our renowned onsen manju, sweet buns, steamed to perfection.

Each bite tells a tale of Izunokuni's culinary prowess, inviting you to savor the rich, diverse tastes that define our region's gastronomic heritage.



Scan the QR code to see the most up-to-date culinary options in Izunokuni.



GASTRONOMIC DELIGHTS

Onsen Manju

Discover the famed specialty of Izunokuni, the "Onsen Manju," a beloved treat renowned as a signature delight of Izunagaoka Onsen. These delightful confections, named after the onsen they hail from, are soft, steamed buns filled with various sweet fillings. Each shop proudly presents its distinct version, with recipes passed down through generations, resulting in a delightful array of colors, shapes, and flavors. As you wander through Izunokuni, sampling these treasured buns, relish the opportunity to uncover your preferred variation among these cherished local delicacies.





Panso-no-Pan

"Pan-so no Pan" or "Bread Originator's Bread", a culinary marvel steeped in history as it commemorates the birth of Japan's first-ever bread, made right here in Izunokuni during the Edo period by Egawa Tarozaemon, the Nirayama magistrate. Recreated to perfection, "Pan-so no Pan" pays tribute to this milestone, offering firm-textured buns that can be savored crumbled or soaked in soups for a unique dining experience. Join us at the "Pan-so no Pan Matsuri" (festival) to celebrate this legacy, where the flavors and heritage of this iconic bread come to life in Izunokuni.



Seasonal Fruits

Immerse yourself in Izunokuni's exquisite variety of fruits, each boasting its season's essence. Dive into the sweetness of "Beni Hoppe" ("Red Cheeks") strawberries, grown predominantly in local strawberry farms from December to May. Discover the joy of strawberry picking at the local Strawberry Picking Center, a bustling spot among tourists from mid-December, where freshly plucked strawberries burst with flavor.

Savor the tangy sweetness of "mikan" (mandarin oranges) available from October to early January, a cherished local harvest. Explore the Osaka Community Farm for a delightful mandarin-picking experience from October to early January, offering not only the chance to pick but also to purchase these delightful fruits as souvenirs.

In the summer months of July and August, relish the renowned watermelons from the Tanakayama district, a perfect summer gift. Discover these local delights at markets and roadside stations, making for a cherished summer souvenir.

Experience the thriving cultivation of mini tomatoes, prevalent from July to September in open fields and from November to July in greenhouses. Engage in the exquisite taste of the 'Chika' variety nurtured by the new farmers, known for its condensed flavor in every small fruit.

Clockwise: Strawberry Baumkuchen; Blueberry Ice Cream; Mikan Orange Sauce; Fruits Jelly.



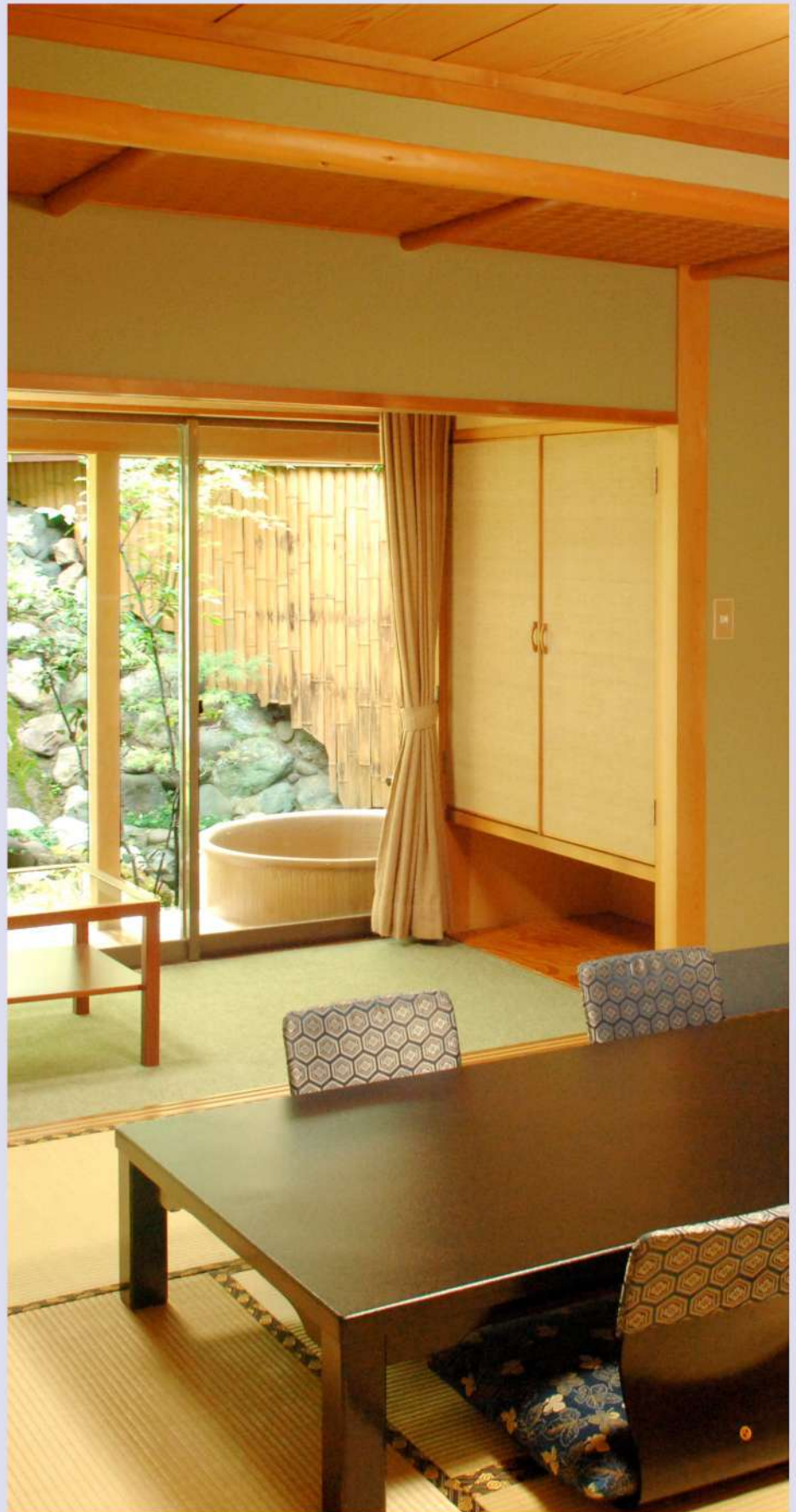
RELAXING ACCOMMODATIONS

Lodging and Stay Experiences

Experience the essence of Izunokuni's hospitality in our array of lodging options, where traditional ryokans offer serene retreats nestled amidst nature's embrace. Indulge in the timeless allure of onsen resorts, where therapeutic hot springs soothe and rejuvenate the soul. Immerse yourself in the graceful elegance of geisha culture, witnessing mesmerizing performances and enjoying refined entertainment. Our accommodations blend modern comforts with authentic charm, promising a stay that captures the spirit of our region's warm hospitality and leaves you enchanted by Izunokuni's unique allure.



Scan the QR code to see the most up-to-date lodging accommodation options in Izunokuni.



RELAXING ACCOMODATIONS



ONSEN ACCOMMODATIONS

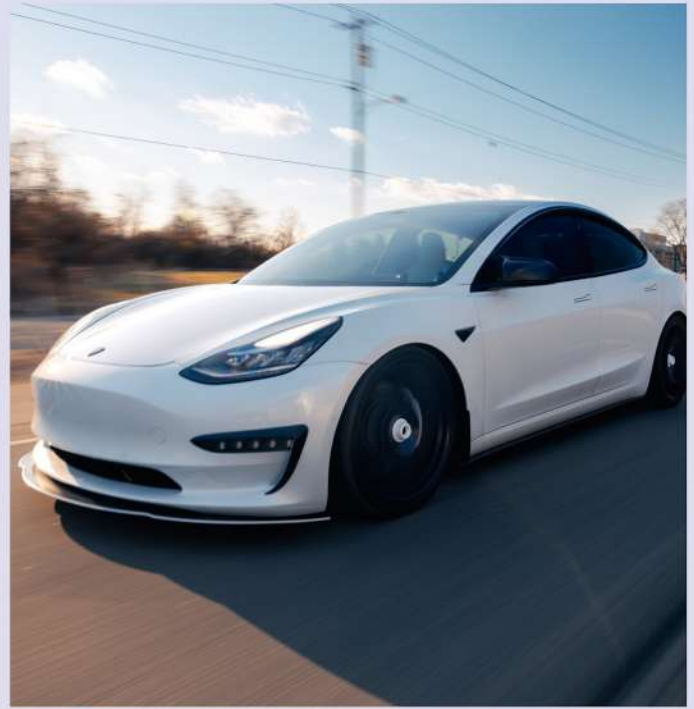
Onsen Accommodations, where relaxation meets rejuvenation in the soothing embrace of therapeutic hot springs. Nestled amidst the scenic landscapes of Izunokuni, this tranquil onsen town invites you to unwind in its healing waters. Immerse yourself in the time-honored tradition of onsen bathing, where mineral-rich waters promise to ease your tensions and revitalize your spirit. With a variety of ryokans and accommodations offering authentic experiences, indulge in the ultimate relaxation and cultural immersion that define the essence of onsen.

For accommodations, experience an unforgettable stay in the heart of Izunokuni, where traditional ryokans and modern accommodations await, each

offering a unique glimpse into our rich cultural heritage. From the serene simplicity of tatami rooms to luxurious comforts, every stay promises an authentic and restorative experience. Delight in the meticulous hospitality, relish in exquisite kaiseki meals, and surrender to the tranquility of your surroundings. Immerse yourself in the allure of Japanese tradition while enjoying the modern conveniences that complement your serene retreat.



PRACTICAL INFORMATION



Getting to Izunokuni

By “Shinkansen” (High Speed Bullet Train)

To reach Izunokuni by Shinkansen, travelers can board the Tokaido Shinkansen line, which links major cities such as Tokyo, Nagoya, and Osaka. The nearest Shinkansen stop to Izunokuni is Mishima Station. From Mishima Station, visitors can easily transfer to the Izuhakone Railway's Sunzu Line towards Shuzenji and disembark at Izunagaoka Station. This local train ride takes approximately 15 minutes and offers a convenient route directly into Izunokuni. Taxis and rental cars are also available at Mishima Station for those seeking a more direct transportation option to explore Izunokuni upon arrival. It's recommended to check the train schedules and transportation options in advance for a smooth and efficient journey to Izunokuni via the Shinkansen and local trains.

By Car

To travel to Izunokuni by car, visitors can access the city via various expressways and highways. From Tokyo, take the Tomei Expressway towards Nagoya and exit at Numazu IC. Then, follow the signs for Izunokuni via Route 1 or Route 136, providing scenic routes into the city. Alternatively, from Nagoya, utilize the Tomei Expressway towards Tokyo and exit at Numazu IC, leading onto Route 1 or Route 136 towards Izunokuni. The drive offers picturesque views of the surrounding landscapes and Mt. Fuji in the distance. Once in Izunokuni, visitors can explore the city at their own pace, enjoying the convenience of rental car services available at major transportation hubs for further exploration and sightseeing.



PRACTICAL INFORMATION

Getting Around Izunokuni

To navigate Izunokuni city and its scenic attractions, visitors have several transportation options. Rental bikes are available at various locations, offering an enjoyable way to explore the city's charming streets and serene landscapes at a leisurely pace. Additionally, rental cars provide flexibility and convenience, allowing travelers to access different areas of interest within Izunokuni and its neighboring spots. Taxis are readily accessible and efficient for reaching specific destinations or traveling comfortably across the city. Furthermore, Izunokuni boasts a well-connected local bus network, facilitating convenient travel between key landmarks and attractions. For those inclined toward adventure, hiking trails and walking paths offer delightful ways to experience the city's natural beauty. Whether by bike, car, taxi, or exploring on foot, visitors can tailor their transportation choice to best suit their itinerary and preferences in exploring Izunokuni.

Bike Rental Locations and Facilities

Izunagaoka Station

773-2, Nanjo, Izunokuni City

Izunokuni Tourism Association

255, Kona, Izunokuni City

MERIDA Japan

<https://www.merida.jp/x-base/facility/>

Kona Stay

<https://www.konastay.jp/activity/>



Car Rental

Tokyo Rental Co., Ltd. - Niiyama Branch

- Address: 852-1 Baraki, Izunokuni, Shizuoka 410-2124, Japan
- Phone: 055-949-7780

Clover Camping Car Rental Izunokuni Store

- Address: 145-4 Moriki, Izunokuni, Shizuoka 410-2317, Japan
- Phone: 0568-41-2800

ENEOS Dr. Drive Self Ohito SS

- Address: 74 Yoshida, Izunokuni, Shizuoka 410-2322, Japan
- Phone: 0558-76-1371

Taxi Companies

Izuhakonekotsu Nagaokaieigyosho

- Address: 241-1 ChŪjō, Izunokuni, Shizuoka 410-2121, Japan
- Phone number: 055-984-1284

Izuhakone Taxi (Nagaoka Dispatch Center)

- Address: 631-21 Kashiwakubo, Izunokuni, Shizuoka 410-2407, Japan
- Phone number: 0558-72-1811

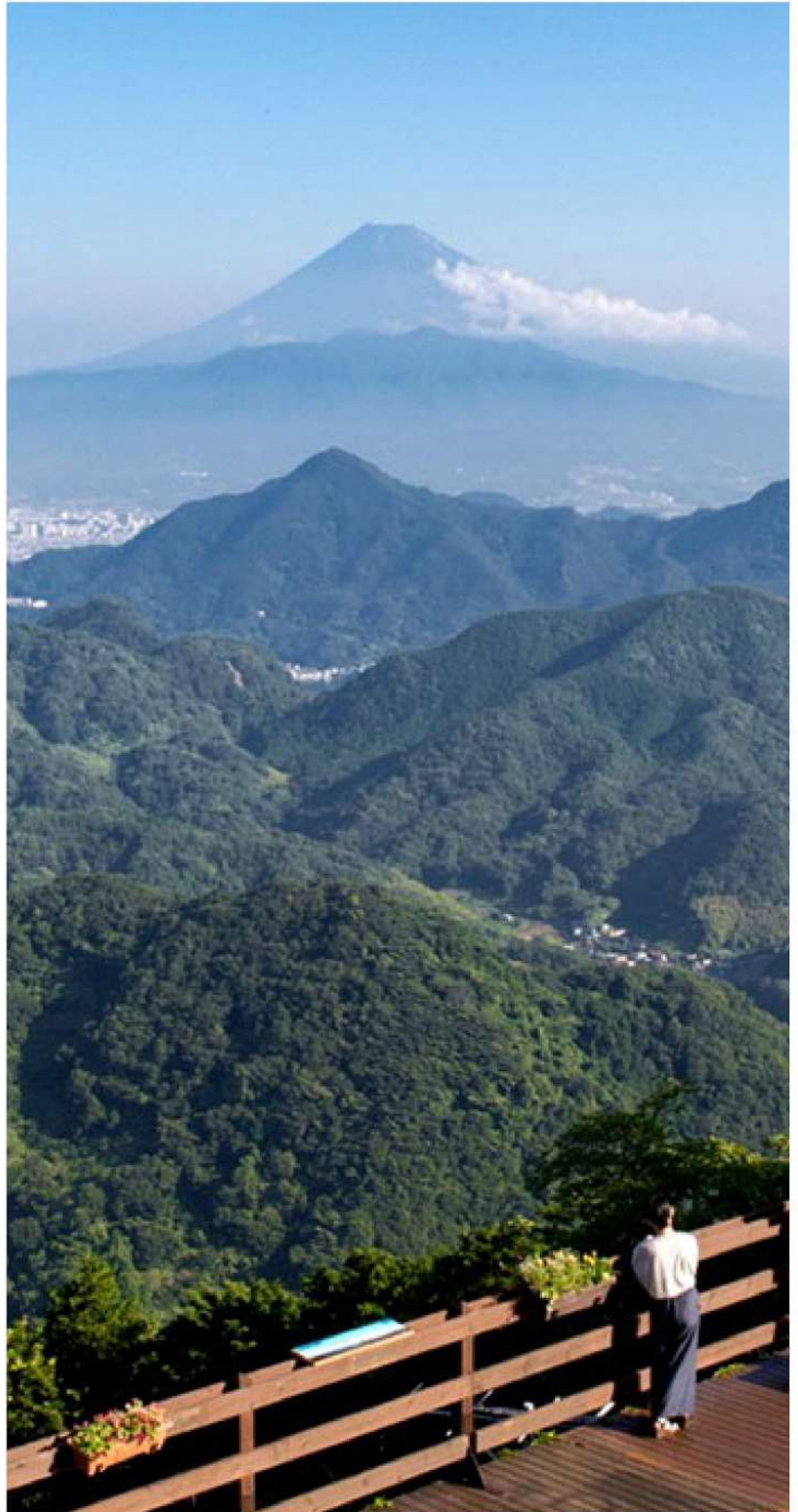


Scan the QR code to explore the cycling map and up-to-date information here

PRACTICAL INFORMATION

Climate

Izunokuni enjoys a mild climate, with spring temperatures ranging from 10°C to 20°C (50°F to 68°F), perfect for cherry blossoms. Summers bring warmth, reaching highs of 25°C to 30°C (77°F to 86°F), ideal for outdoor adventures. Fall showcases vibrant colors, with temperatures ranging from 15°C to 25°C (59°F to 77°F). Winter brings a gentle chill, averaging 5°C to 10°C (41°F to 50°F), inviting relaxation in the city's soothing hot springs. Throughout the year, Izunokuni offers diverse experiences suited to its pleasant climate.



PRACTICAL INFORMATION



Emergency information

Police Stations

CALL 110

In Izunokuni, if you encounter an emergency or require police assistance as a tourist, dial 110 for immediate help. When calling, try to provide your location as accurately as possible, explain the situation clearly, and remain calm while waiting for the authorities to arrive. The police in Izunokuni are responsive and dedicated to ensuring safety and support for all visitors.

Izuchuo Police Station

239-4 Mifuku, Izunokuni, Shizuoka 410-2321

Nagaoka Police Box

1153-5 Nagaoka, Izunokuni, Shizuoka 410-2211

Nirayama Police Box

332-17 Yokkamachi, Izunokuni, Shizuoka 410-2123

Numazu Police Station

337-6 Uchiuramito, Numazu, Shizuoka 410-0223

Fire Department

CALL 119

If you come across a fire or need urgent assistance from the fire department as a tourist in Izunokuni, dial 119. Ensure you describe the location accurately and explain the situation clearly when calling. Keep calm, follow safety instructions, and evacuate to a safe area while waiting for the fire department's arrival. Izunokuni's fire department is well-prepared and swift in responding to emergencies, prioritizing safety and providing immediate aid to those in need.

Suntoizu Fire Department Hq Tagata Naka Fire Department

327-1 Shirayamado, Izunokuni, Shizuoka 410-2318

Suntō-Izu Fire Dept HQ, Tagata North Fire Station

394-1 Nitta, Kannami, Tagata District, Shizuoka 419-0114



PRACTICAL INFORMATION



Medical Emergency **CALL 119**

Experiencing a medical emergency as a tourist in Izunokuni might seem overwhelming, but there's no need to worry. In such situations, dialing 119 will connect you to an ambulance service with English-speaking operators. For less urgent cases, seek assistance at one of the nearby hospitals listed below. Keeping calm and articulating your situation clearly are essential. Additionally, seek support from your embassy or the local Tourist Information Center for guidance through unfamiliar healthcare systems.

Izu Hoken Medical Center

- Address: 270-1 Takyo, Izunokuni, Shizuoka 410-2315, Japan
- Phone Number: 0558-76-0111
- Specialties: General medicine, internal medicine, pediatrics, surgery

Sugimoto Clinic

- Address: 1629-1 Nanjo, Izunokuni, Shizuoka 410-2114, Japan
- Phone Number: 055-949-2222
- Specialties: Internal medicine, gastroenterology, cardiology

Juntendo University Shizuoka Hospital

- Address: 1129 Nagaoka, Izunokuni, Shizuoka 410-2211, Japan
- Phone Number: +81 55-948-3111
- Specialties: Comprehensive care, including oncology, neurosurgery, orthopedics

Izunirayamaonsen Hospital

- Address: 234-banchi Chujo, Izunokuni, Shizuoka 410-2195, Japan
- Phone Number: 055-949-1466
- Specialties: Rehabilitation, geriatrics, pain management

Izu Medical Welfare Center

- Address: 202-banchi, 202 Jike, Izunokuni, Shizuoka 410-2122, Japan
- Phone Number: 055-949-1165
- Specialties: Long-term care, nursing, mental health services



ADDITIONAL RESOURCES

Q&A:

Are all attractions or restaurants open the whole year?

Attractions and restaurants in Izunokuni may not operate year-round. While some prominent landmarks, restaurants, and cultural sites maintain year-round schedules, others might have seasonal closures or specific operating hours. It's advisable for visitors to check the individual establishment's websites or contact them directly for accurate information regarding their opening hours, seasonal closures, or any special schedules. The Izunokuni Tourist Information Center can also provide up-to-date details and guidance regarding the operating hours of various attractions and dining venues, ensuring an optimal and enjoyable visit to Izunokuni.

Where can I buy tickets or reserve restaurants?

For purchasing tickets or making restaurant reservations in Izunokuni, visitors can find ticket counters and restaurant reservation desks at major tourist hubs, such as the Izunokuni Tourist Information Center, located near the Izunagaoka station. Additionally, many hotels in Izunokuni offer concierge services that assist guests in securing tickets for local events or making reservations at recommended restaurants. Some popular dining establishments may also accept online reservations through their official websites or third-party booking platforms, providing convenience for visitors planning their gastronomic experiences in Izunokuni.

Simple Japanese Guide

- **Hello** - こんにちは - (Kon ni chi wa)
- **Good evening** - こんばんは - (Kon ban wa)
- **Please** - お願いします - (O ne gai shi masu)
- **Thank you** - ありがとうございます - (A ri ga tou go zai masu)
- **Excuse me/I'm sorry** - すみません - (Su mi ma sen)
- **How much is this?** - いくらですか? - (Iku ra desu ka?)
- **Where is this?** - どこですか? - (Do ko desu ka?)
- **Do you speak English?** - 英語が話せますか? - (Ei go ga ha na se masu ka?)
- **Where is the restroom?** - トイレはどこですか? - (Toi re wa do ko desu ka?)
- **Where is the station?** - 駅はどこですか? - (E ki wa do ko desu ka?)
- **Can you call a taxi for me?** - タクシーを呼んでいただけますか? - (Ta ku shii o yon de i ta da ke masu ka?)
- **I would like to go to here.** - ここに行きたいです。 - (Ko ko ni i ki tai desu)
- **Is there free wifi?** - 無料のWi-Fiはありますか? - (Mu ryou no Wi-Fi wa a ri masu ka?)
- **Can you please help me?** - 助けていただけますか? - (Ta su ke te i ta da ke masu ka?)
- **Do you have an English menu?** - 英語のメニューはありますか? - (Ei go no me nyuu wa a ri masu ka?)
- **I'd like to order, please** - 注文をお願いします - (Chuu mon o o ne gai shi masu)
- **I'll have this, please** - これをください - (Ko re o ku da sai)
- **Water, please** - お水をください - (O mi zu o ku da sai)
- **It's delicious!** - おいしいですね - (O i shii desu ne!)
- **Check, please** - お会計お願いします - (O kai kei o ne gai shi masu)



