

Padel Holidays



PADEL

HOLIDAY FULL OF
PADEL ACTION!



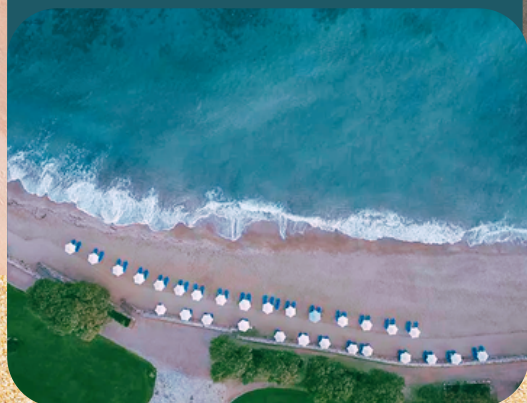
LUXURY

5* HOTEL LOCATED ON
THE ISLAND OF CRETE



RELAX

RECHARGE AND RELAX BY
THE STUNNING GREEK
BEACHES



DATE

06 - 13 April 2025
7 nights

LOCATION

Kalimera Kriti Resort 5*
Crete, Greece

PROGRAM

5 days of Padel
training/accompanied play*

PREPARE FOR INTERBLUBS
**JOIN WITH
YOUR
INTERCLUB
TEAM**

 padel@alphasportsacademy.be



ALPHA
SPORTS ACADEMY

Information

INCLUDED IN THE PACK

- ✓ 7 night stay in the resort
- ✓ Free transport from/to airport, on arrival and departure days
- ✓ Full board PLUS. Breakfast/Lunch/Dinner with local alcoholic and non alcoholic drinks during lunch and dinner
- ✓ 5 day morning padel training, afternoon accompanied play
- ✓ 18 hours of accompanied padel action!
- ✓ 1 day off to explore local culture & hotel activities

NOT INCLUDED

- ✗ Flights (to be booked individually)
- ✗ Private lessons (possibility with extra cost)

PRICES**

WITH PADEL PROGRAM: **€1040**

WITHOUT PADEL PROGRAM: **€860**

INSCRIPTIONS

Email to padel@alphasportsacademy.be
with following details:

- Surname/First name
- Date of birth
- Phone Number
- Email address
- Room Type

* Option to book without the padel activities

** Prices are per person and in a **double room or bungalow with garden view**.
For other room options see pages below.

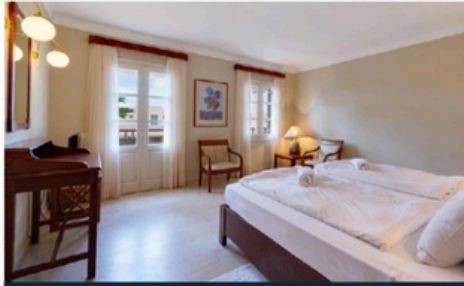
Room upgrades

Optionally you can book the following room categories for an additional charge. Surcharges per adult/week:

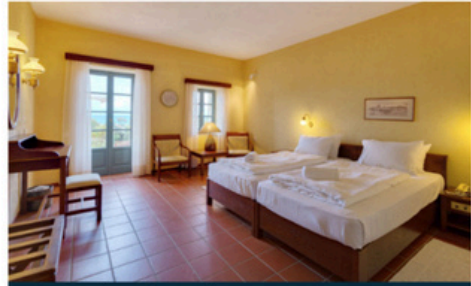
+Bungalow Sea View	56,-
+Bungalow Waterfront	77,-
+Bungalow Suite Waterfront	252,-
+Deluxe Double Room Sea View*	126,-
+Luxury Double Room Sea View*	154,-
+Luxury Suite Sea View	392,-
+Family Suite Garden / Mountain View	84,-
+Family Bungalow Suite Sea View	133,-
+Deluxe Family Suite Sea View	329,-
+Bungalow / Double Room Garden View for single use	175,-
+Bungalow Sea View for single use	238,-
+Bungalow Waterfront for single use	252,-
+Deluxe Double Room for single use*	364,-
+Luxury Double Room for single use*	392,-

*Limited availability.

Rooms



Double Room Garden View



Bungalow Sea View



Bungalow Waterfront



Bungalow Suite Waterfront



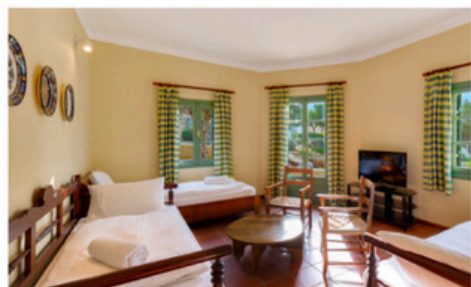
Deluxe DR/Bungalow Sea View



Luxury Double Room Sea View



Luxury Suite Sea View



Family Suite Garden/Mountain View



Family Bungalow Suite Sea View



Deluxe Family Suite Sea View

Room Information

Double Room or Bungalow garden-/ mountainview (28-35 m²) you stay either in the main building or in one of the bungalows on the premises. The view from the balcony and terrace goes into the landscaped gardens of the resort.

Bungalow seaview (30-35 m²) is located in the bungalow village of the resort and impresses with a beautiful view of the Cretan Sea.

Bungalows waterfront (30-35 m²) are located directly in the first row of bungalow houses directly on the sea. Here you can enjoy the unobstructed view and enjoy romantic sunsets.

Deluxe Double Room seaview* (28 m²) you also have a stunning view over the sea from the balcony. The bathroom has a separate, floor-level shower and a separate toilet.

Luxury Double Room seaview* (36 m²). In the renovated rooms you also have a breathtaking view over the sea from your balcony. Additionally, this room is equipped with a king size bed (or optionally two luxurious single beds). The bathroom here has a separate, floor-level shower, a free-standing bathtub and a separate toilet.

Family Bungalow Suite seaview (48-60 m²) also have a living room and are located in one of the bungalow villages.

Bungalow Suites waterfront (40-60 m²) you live in a perfect location directly at the sea and can enjoy the sunset on your terrace. Here you will even find deck chairs and umbrella, because the terraces in this category are furnished. Some of the suites are maisonette rooms.

Luxury Suits seaview (65-75 m²) are the crowning glory of the room categories. These uniquely designed suites are located in the main building or in the bungalow village and also have views of the sea from the furnished balconies or terraces. In addition to a bedroom and separate living room with sleeping facilities, there are two bathrooms, one with a free-standing bathtub and floor-level shower, the other with a floor-level shower and both with separate WC.

Family Suite gardenview (48-60 m²), because here there is a living room in addition to the bedroom. The rooms are either in the main building or in the bungalow village.