



JMA Aluminium Group:

Guangdong JMA Aluminium Profile Factory(Group) Co.,Ltd.
Foshan JMA Aluminium Co.,Ltd.

Add: Xiao Tang Nanhai Nonferrous Metals Industrial Park, Shi Shan Town,
Nanhai District, Foshan city, Guangdong Province, China

Zip: 528231 Tel: 86-757-85558828 Fax: 86-757-85550238 / 85599322

Website: <http://www.jma.cn> <http://www.jma-aluminum.com>

E-mail: sales@jma.cn jmmaster@jma.cn



JMA Website



Webchat ID:jmagroup

Introduction of JMA Group:

JMA Group was founded in 1993. It is located in Nanhai District Foshan City Guangdong Province, the only demonstration area of aluminum profile famous brand. JMA Group is a comprehensive leading enterprise that integrates research, design, production and sales of aluminium alloy construction profiles, industrial aluminium profile as well as aluminium alloy doors & windows and curtain walls. Its products have been widely applied in the marine work platform, container, automobile, ship, railway transport, military accessories, electronic communication hardware, building formwork, bridge and other fields.

From 1997, JMA introduced the management systems of quality, environment, career health, energy, brand cultivation etc. In 2002, JMA started information and industrial mix project. And in 2010, JMA was awarded as "Demonstration Enterprise of Industrial and Information Facilitate Energy Saving" by the Ministry of Industry and Information Technology, and introduce excellent performance management system.

By learning mixing theory of quality management system of American economists and Japanese quality master, and deeply study strength of itself and the features of the industry, JMA extracted the "Three Concern & Two Complete" quality management system during the process of embedding of value chain, applied it to management of enterprise and achieve great success. In 2015, JMA was awarded as quality demonstration enterprise of management experience by the Ministry of Industry and Information Technology, and nominated as second term of China Quality Award.

Based on the theory of "What support the brand is quality and innovation, what support quality and innovation is management, what support management is culture." JMA worked out "brand, talent, innovation, marketing and brand" strategy and goal. By building the core value of "insisting on pursuing perfection", we encourage our employees to pursue perfection on improving quality and service, innovation, brand building, which became the continuous motivation.

With the increasing input, JMA's manufacturing base has been up to 1200 acres. JMA owns domestic leading level of power-saving environmental melting line, extrusion machine introduced from Japan and Italy, automatic vertical electrophoresis line and PVDF line. JMA successfully built the world leading level of three dimensional, automatic warehouse, mould cutting center, thermal break aluminium profile production center, further processing center, bought more than 100 sets of international advanced testing equipment. JMA set up national enterprise technology center, post-



JMA wins the Nomination Award of the 2nd China Quality Award in 2016. Chairman and CEO Cao Zhanbin (6th from the left) is accepting the award in the Great Hall of the People in Beijing.

doctor research station, national recognized laboratory, technology research center, which guarantee research innovation. By independent and associated research and development, JMA has built the core technology system of aluminium profile solution for curtainwall of super high rise building, produce technology of profile for inter-city train, smoke prevention and dust control in aluminium melting, zero emission in anodizing pre-treatment, high edge environmental friendly window & door system research technology. JMA has become the only one enterprise, which take part in the whole process of national "Eleven Five" and "Three Five" technology support plan key project, awarded two of national key new product award. Leading in or participating in setting international standards, national standards and industrial standards up to 92 rules. Meanwhile, we think highly of the protection of intellectual property. We have issue patents of 350, innovation patent of 8, and applied for international patents of 3.

So far, JMA Group has been well known, and think high of in home and abroad. Our products sell well in more than 20 provinces and cities, export to more than 70 countries and districts. JMA profile has been applied in many domestic and oversea famous key projects and landmark buildings, such as the Great Hall of the People, Diaoyutai State Guesthouse, the new CCTV headquarters, Beijing Olympic Village, Hong Kong International Commercial Center, California Federal Building, Japan Tokyo Post Tower, and Doha Dubai Tower. By now, five of ten highest landmark buildings in the world have been built with JMA aluminum products.

Thanks to the help and concern from the government and society, especially the trust and support from our clients, JMA grows step by step, continuously and healthy. JMA would insist on the theory of brand, innovation, harmony and win-win, spare no effort for the achievement of the everlasting JMA brand.



The director was reporting to ZhangDejiang, a member of the Standing Committee of the Politburo of the CPC Central Committee and the Chairman of the National People's Congress of the People's Republic of China, and WangYang, the Vice Premier of the State Council, and leaders at all level of Foshan City.



The President Cao Ruibin was introducing the situation of production equipment to Hu Chunhua, a member of the Political Bureau of CPC Central Committee and Secretary of Guangdong Provincial Party Committee.

In 1993

· Founded by Brother Cao;

In 2000

· Awarded as the Enterprise of High Quality and Efficiency;



In 2004

· Achieved "China Top Brand" as the best reputation of Chinese product;
· Got the "Gold Cup Award for products reaching the International Entity Quality Standard" by China Nonferrous Metals Industry Association;
· Awarded as Guangdong Well-Known Trademark by Industrial and commercial Bureau of Guangdong Province;



In 2007~2008

· Gained China energy-saving product certificate;
· Became Technology Center of Guangdong province;
· Awarded as the best brand establishment enterprise of Greater China by China trademark bureau;
· Honored with China well-known trademark;
· Honored with the China Top Brand;
· Awarded as advanced Construction Enterprise of National Scientific and Technology Innovation;



In 2011

· Top ten Most Influential Brands of Aluminum Industry;
· Key National Torch Plan high-tech Enterprises;



In 2013

· Cultivation and Pilot Enterprise of China Industrial Brand;
· ISO 28340:2013 International Standard Development and Innovation Demonstration Base;
· GB 5237 National Standard Development and Research Demonstration Base of Construction Aluminum Alloy Profiles;
· Top Ten Backbone Enterprise in Demonstration Area for Creating Well-known Brand of National Aluminum Profile Industry (Ranked the 1st)



In 2015

· Named as "Quality Model of Industrial Enterprises" by MIIT;
· Honored with "Top Brand of National Nonferrous Metals Industry";



In 1997

· Awarded as the Designated Enterprise of aluminum profiles Productions of windows, doors and curtain wall of China Construction Metal Structure Association;



In 2003

· Honored with one of the top ten China aluminum profile enterprises;
· Awarded as the advanced enterprise by adopting International Standard of Guangdong Province;



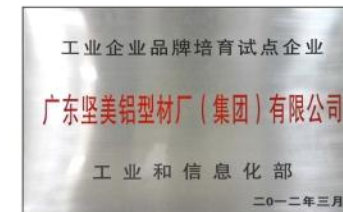
In 2006

· Passed the authentication of ISO 14001:2004 environment management system;
· Acting as the test research base of GB 5237 Construction Aluminum Alloy Profiles by China Technical Standard Committee of Nonferrous Metal;
· Awarded as an advanced Enterprise of Self-Independent Innovation by Ministry of Construction;



In 2009~2010

· Honored by the Ministry of Industry and Information Technology of the PRC as the "Pilot and Demonstration Enterprise to Promote Energy Conservation through Integration of Informatization and Industrialization";



In 2012

· "Experimental Enterprise on Brand Cultivation" awarded by National Industry and Information;



In 2014

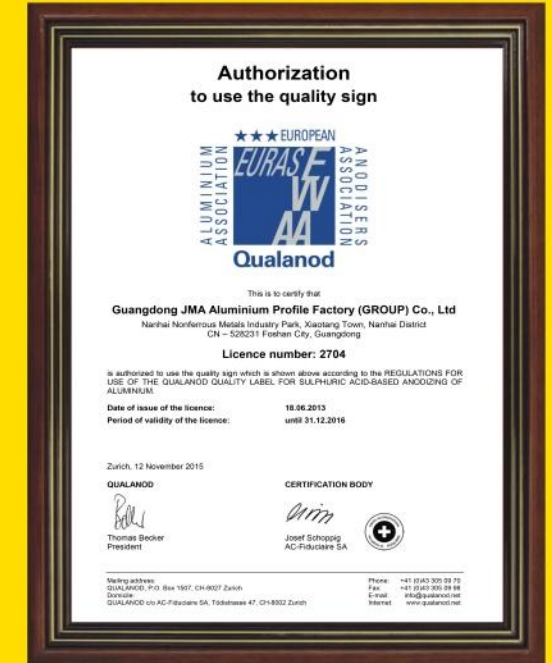
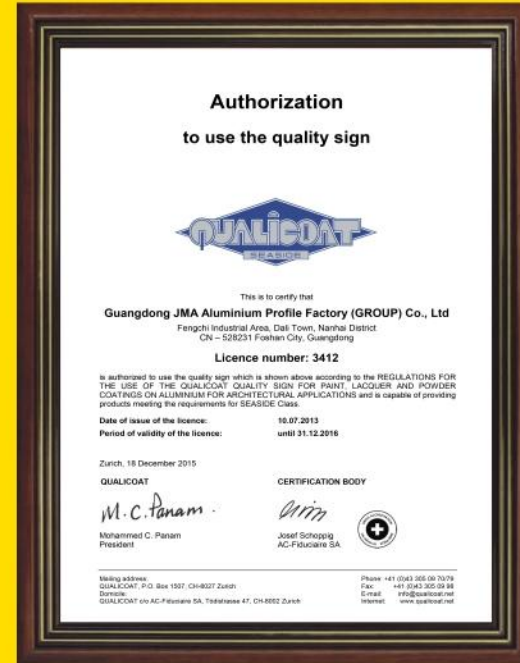
· Got Government Quality Award of Guangdong;
· Passed the national laboratory accreditation;
· Became the enterprise technology center recognized by the state;
· Awarded as "Innovative Enterprise of Guangdong";



In 2016

· Won the Nomination Award of the 2nd China Quality Award;





MECHANICAL EQUIPMENT IN LINE WITH INTERNATIONAL LEVEL

Melting Workshop

Melting equipments: 22 advanced hot-top billet casting production lines.



9000 tons and 5000 tons Extruding Machine



Design Center of Mould



Casting Workshop

EXTRUDING PRODUCTION LINE

Extruding equipments: 51 extruding machines of various specification including 3000-9000 ton extruding line: 4, and 600-2350 ton extruding line: 47.

Characteristics: Heating the billet by gas-burning evenly and quickly, cooling the profile by balanced intensive cooling system, it can produce aluminum alloy of 2XXX, 5XXX, 6XXX, 7XXX series and so on. Equipped with triplicate pulling system, it can produce different kinds of big size of industrial profiles with CCD 720 mm used for traffic, electronic, building etc.

The biggest size of rectangle we can do: 700×100mm.
The biggest size of round tube we can do: 500mm (Diameter) .

ANODIZING & ELECTROPHORESIS COATING PRODUCTION LINE IMPORTED FROM JAPAN

Equipments: 6 lines in total, including horizontal style: 2 and vertical style: 4.
Production standards: GB5237.2-2008、GB5237.3-2008 and Qualanod of Europe Technical Standards.



POWDER COATING PRODUCTION LINE

Equipments: 9 lines in total, including horizontal line: 3 and vertical line: 6 which were imported from Switzerland and Italy.
Production standards: GB5237.4-2008 and Qualicoat of Europe Technical Standards.
Product characteristics: high adhesiveness and good resistance to acid rain and alkali. Elegant and modern in decoration.



Powder Coating Line

PVDF PAINTING PRODUCTION LINE

Equipments: 6 lines in total, including horizontal line: 5 and vertical line: 1.
Production standards: GB5237.5-2008.
Technical characteristics: full set of Randburg PVDF painting line from Japan.
Product characteristics: with good adhesion, high resistance against any climatic corrosion and no dirt accumulation, it has been the best surface treatment at present.



PVDF Painting Line

THERMAL BREAK PROFILE AND WOOD EFFECT PRODUCTION LINE

Equipments: 13 lines in total, including Bar-Insertion style from Switzerland MULLER: 8 and Fill-debridge style from USA: 2.
Wood-effect: 3 lines.



Thermal Break Line of Bar-insertion



Fabrication Workshop



Thermal Break Line of Fill-debridge



Wood-effect Coating Production



Finished Windows & Doors and Curtain Walls



Combined Construction Formwork System of Aluminium Alloy



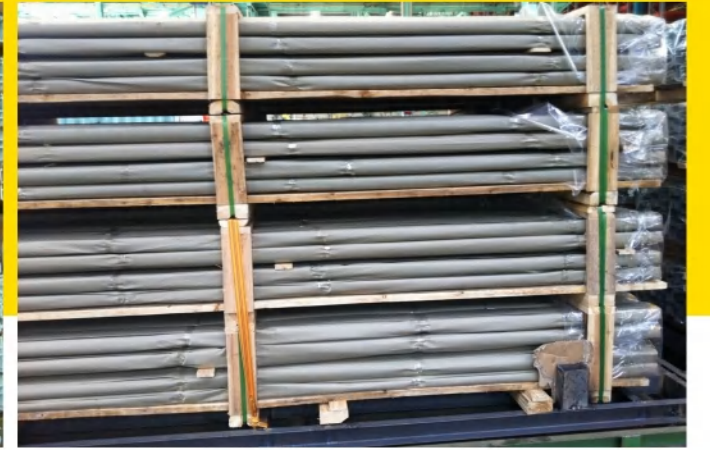
Power Car Technology Cooperation Project of JMA



Pedestrian Bridge



Controller of
Intelligent Warehouse



Intelligent Warehouse



Automatic 3D Storehouse



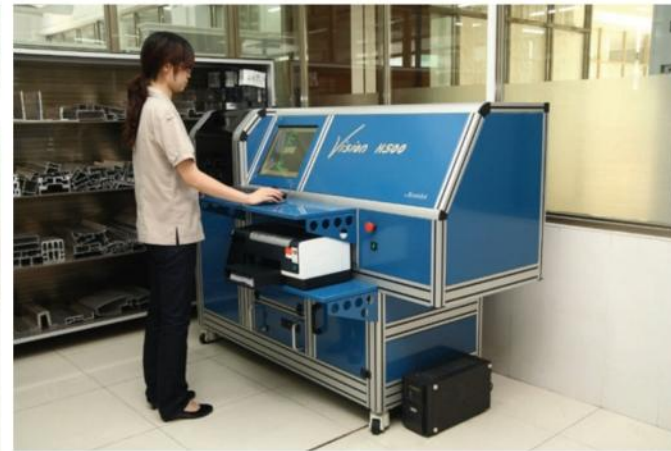
LEADING ENTERPRISE OF PARTICIPATING IN DRAFTING THE NATIONAL & INTERNATIONAL INDUSTRY STANDARDS

JMA representatives participate in constituting ISO 28340:2013 "anodized aluminum and aluminum composite film" product standards and the development of the proposal on behalf of State. Total of eight years, JMA bears more than 30 experimental tasks and has made outstanding contributions for China's grasp of international standards formulate and voice by providing tens of thousands of test data.

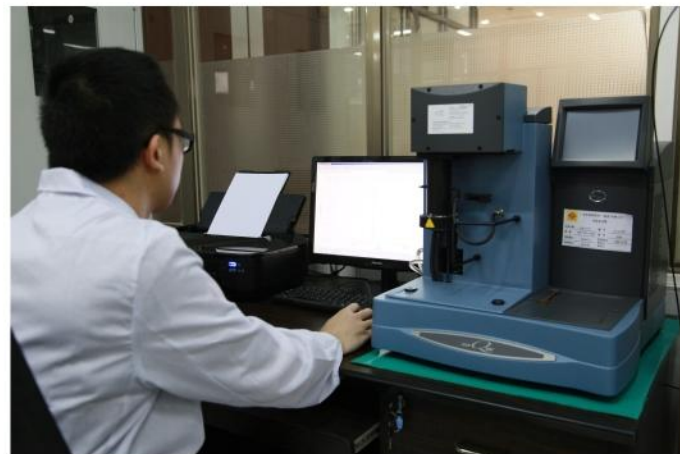
JMA led and participated in 82 national and industry standards, thereinto led the drafting of 16 international standards.



Spectrum Analyzer



Israeli Cross-section detector



Thermogravimetric Analysis



Metaling Vertical Weather Meter



Accelerated Weathering Tester



Tensile Testing Machine



2005 Japan - First discussion meeting for international standards



2011 France - Discussion meeting for international standards



2012 Germany - Finalization meeting for international standards

JMA technical R&D projects and patents over these years:

- ◆ "Twelve Fifth" science and technology supporting plan: research and development of application of architectural outer window system and low energy consumption of glass window system in typical area (Project No. :2006BA502B06;2011BAJ04B04-02)
- ◆ New super-weathering aluminum alloy products(Included in the high-tech products in Guangdong Province)
- ◆ 60 series sunshade open-out insulated aluminum alloy windows (Included in the national key new product)
- ◆ Major project of "Eleven fifth" national technical supporting plan "Research and Development of Environmental Friendly Architecture Material and Production" (task five) (project NO. :2006BAJ02B06);
- ◆ Major project of "Eleven fifth" national technical supporting plan "Large cross-section complicated cross section aluminum alloy profiles extrusion engineered technology research" of "Advanced aluminum fabrication technology R&D" (task three) (project NO. :2007BAE38B03);
- ◆ The National Spark Program project: Innovation and application of aluminum alloy ingot long bar heating furnace energy saving technique (Project number: 2007EA780016)
- ◆ The National Industry and Information department project: Development and application of information system for aluminum energy-saving & emission reduction;
- ◆ Guangdong Province Produce-Learn-Research combined projects: R&D of harmony type of CRH6 intercity train in new materials (Project number: 2011A090200104)
- ◆ Guangdong Province strategic emerging industry of core technology research projects: Development and application of the technology and equipment for waste water zero discharge in aluminum anodizing finish (Project number: 2011A032302001)
- ◆ Guangdong Province science and technology special program project: Application of energy saving and environmental protection type of high efficiency smelting furnace (Project number: 2010A080407001)
- ◆ Guangdong Province science and technology special program project: Key technology development and demonstration of energy saving and waste reducing in aluminum processing (Project number: 2010A080804023)
- ◆ National invention patents: Smoke prevention and dust control engineering technology and device during aluminum alloy smelting process (Patent No.: ZL200710028228.1)
- ◆ Aluminum alloy louver sunshade technology R&D (awarded national patent, listed as national and Guangdong province major new product);
- ◆ Ivory colorful electrophoresis aluminum alloy profiles (listed as Guangdong province major new product);

With “providing professional aluminium products and services with high and humanity for the high-end construction and equipment of China and the world” as its enterprise mission, JMA gradually realizes the integration of resources, transformation and upgrading, brings itself more in line with the world and fully shows company’s production scale, product quality and modernized management (comprehensive strength), meanwhile deepens the exchanges with international enterprises to broaden the cooperation space, which enhance its brand influence in the international market and open a new chapter for its development and cooperation of international business.

Exploration And Cooperation



Alcoa Group visited JMA for cooperation in 1999.



Canadian commercial investigation team visited JMA in 2000.



Algeria national ministerial delegation visited JMA on 15th June,2001.



Financial Group of America visited JMA for cooperation in 2002.



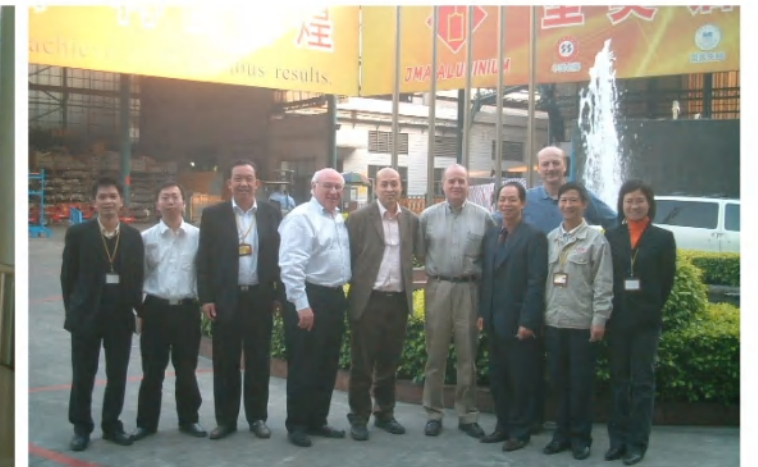
JMA went to Sharjah,UAE,to participate in China Commodity Fair in 2003, taking the first step to attend export fairs overseas.



Japan Fair in 2004.



2005 World Tide column of MHK, Japan, was interviewing the President of JMA.



Metal Exchange Corporation of America visited JMA on 3rd March,2006.



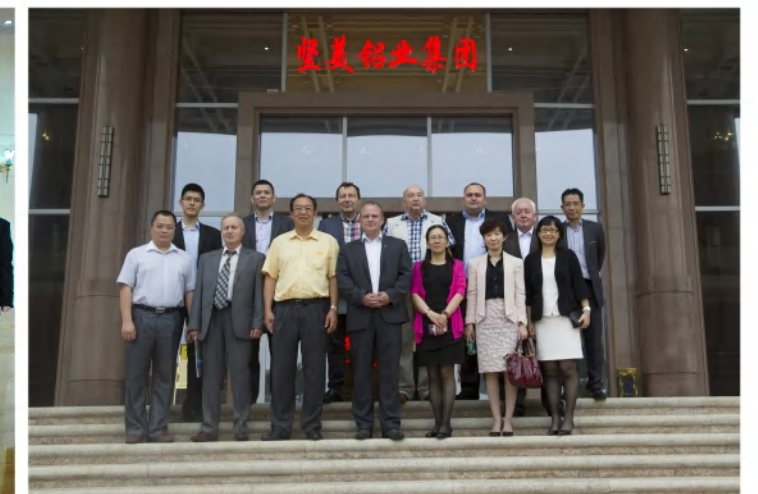
The North American Delegation of Global Aluminium Extrusion Federation visited JMA on 6th November,2006.



JMA cooperated with Fuji Light Metal Group, Japan on 4th November,2010.

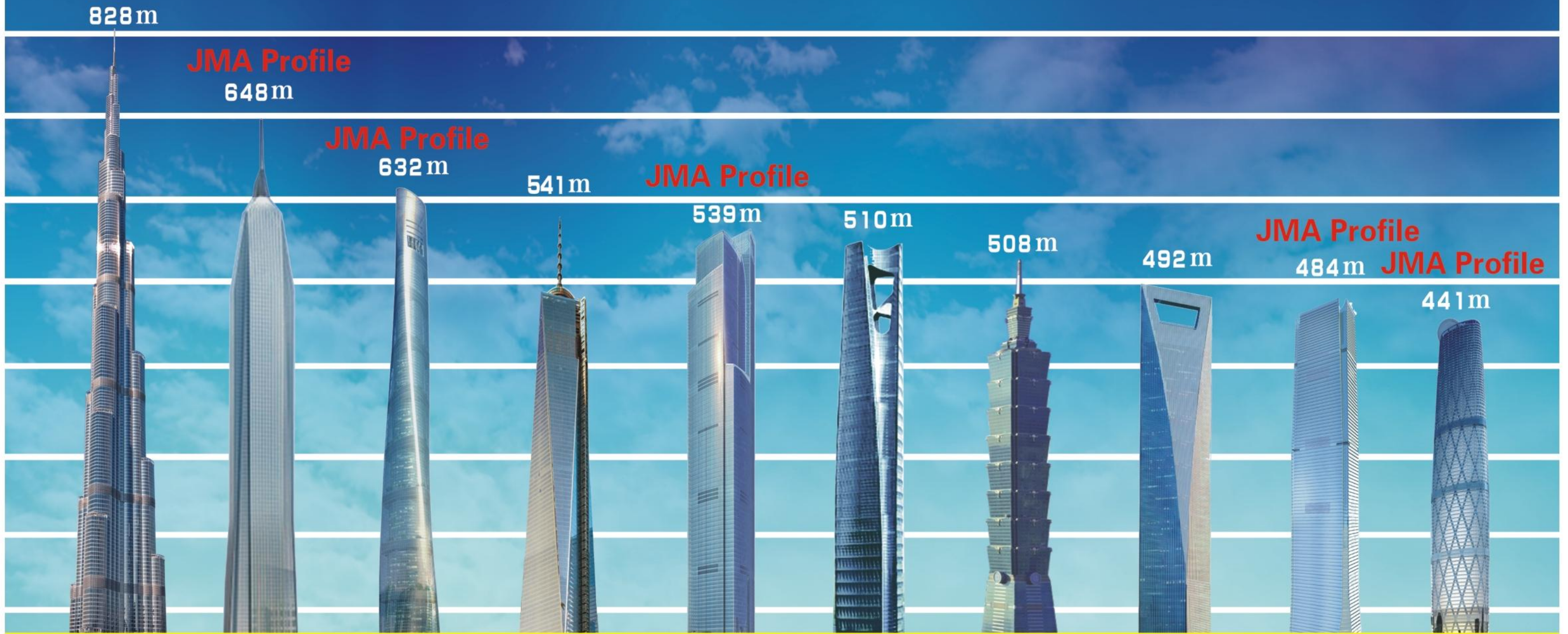


Members of Consulate-General of Iran in Guangzhou visited JMA on 19th December,2013.



Poland Delegation visited JMA on 25th April,2014.

5 Of Top 10 Famous Landmark Buildings In The World Made With JMA Aluminium Profiles



BURJ KHLIFA TOWER, DUBAI, 2010

PINGAN IFC, SHENZHEN CHINA, UC

SHANGHAI CENTER BUILDING, SHANGHAI CHINA, UC

ONE WORLD TRADE CENTER, AMERICA, 2013

GUANGZHOU EAST TOWER, GUANGZHOU CHINA, UC

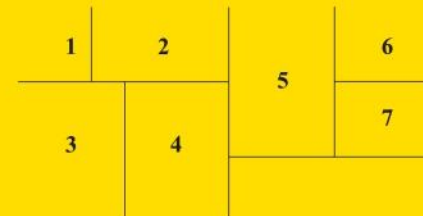
BUSAN LOTTE TOWN TOWER, KOREA, UC

TAIPEI 101, TAIWAN CHINA, 2003

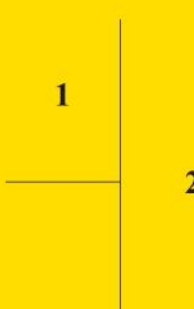
SWFC, SHANGHAI CHINA, 2007

ICC HK, HONGKONG CHINA, 2008

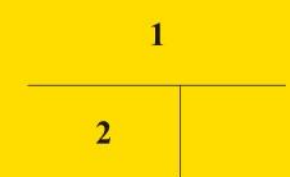
GUANGZHOU IFC, GUANGZHOU CHINA, 2009



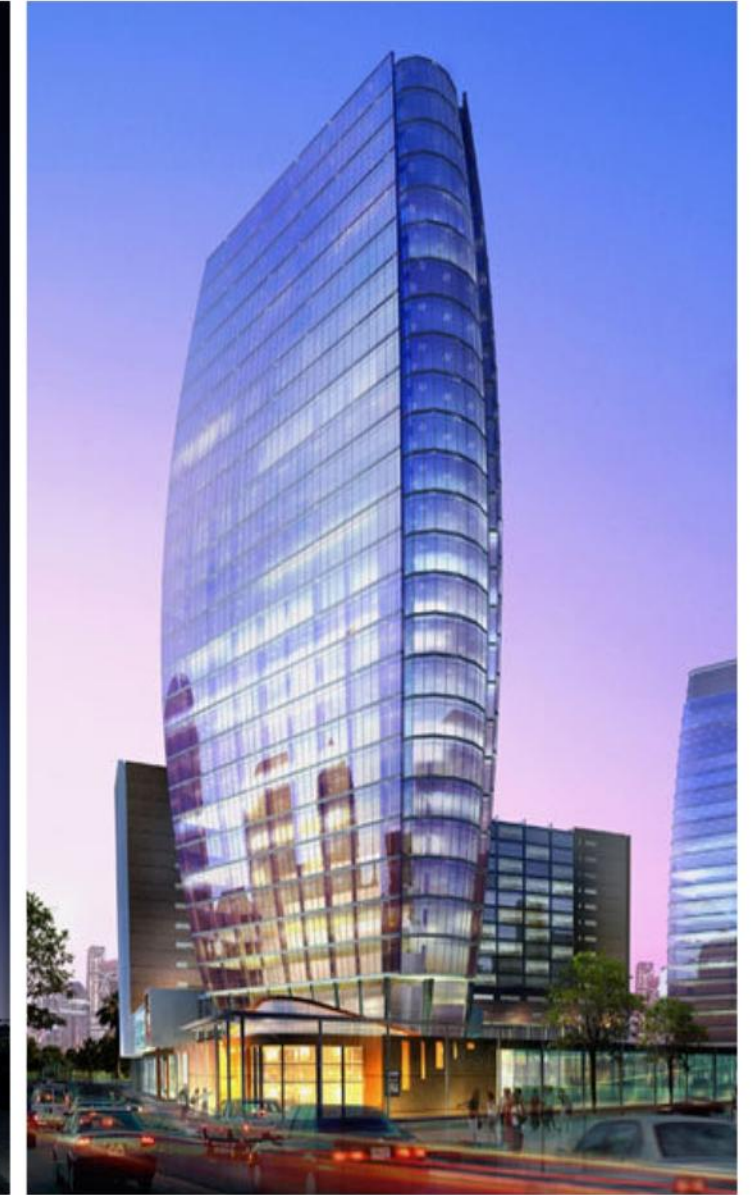
- 1、California Federal Office Building, USA
- 2、Abu Dhabi International Airport, UAE
- 3、Marunouchi 2 Chome (JP TOWER), Japan (2011)
- 4、National Bank of Kuwait headquarters building, Kuwait
- 5、Capital Market Authority, Soudi Arabia (385m high,2013)
- 6、Marina Bay Sand Integrated Resort, Singapore
- 7、Darling Walk, Australia (2010)

1. Mixed Use Development, Dubai
2. Tanjong Pagar Centre, Singapore (290m high, 2015)



1. Hokuia at 1288 Ala Moana, Honolulu, Hawaii
2. Tokyo International Airport, Japan (2013)



1	4	5
2		
3		

1. Mecca Railway Station, Kingdom of Saudi Arabia
2. Royal Children's Hospital, Melbourne, Australia (2010)
3. Financial Center, Abu Dhabi
4. GATEWAY Project, Abu Dhabi
5. Port Baku Render, The Republic of Azerbaijan



1 | 2

- 1、Makati CBD - Greenbelt Hamilton , Philippines (2015)
- 2、1973 Worli Residential Tower , Mumbai , India (310m high, 2015)

1

2

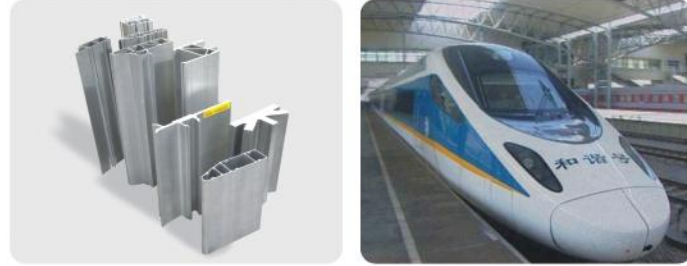
3

- 1、Great Hall of The People of Beijing, China
- 2、Military Museum Building, China
- 3、CCTV New Center, China

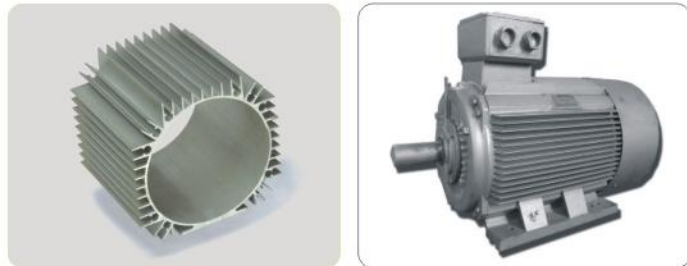
Profile for transportation



Profile for high-speedrail



Profile for electromotor



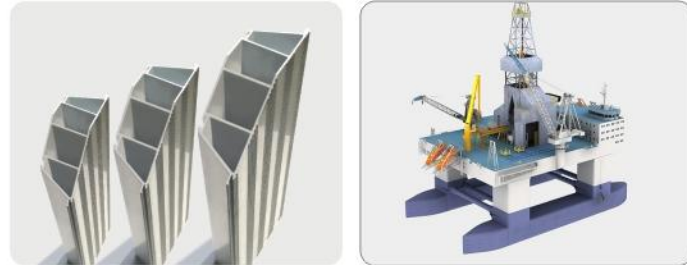
Profile for solar panel



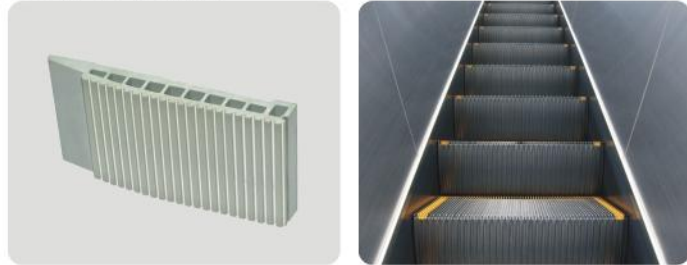
Profile for track



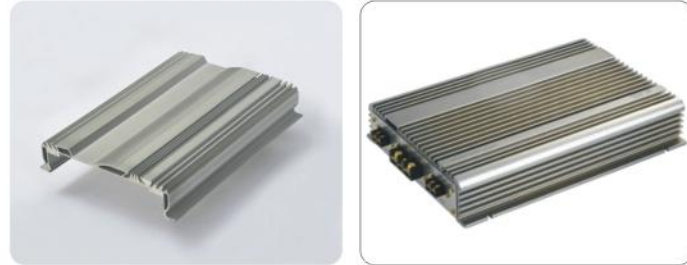
Profile for aviation



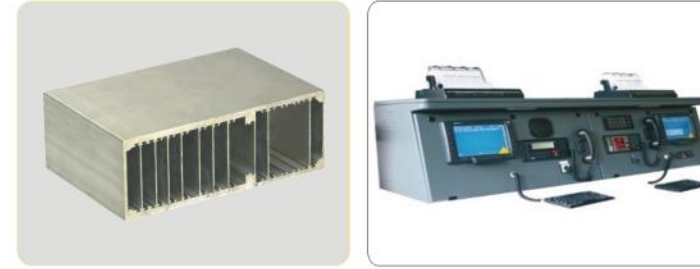
Profile for elevator



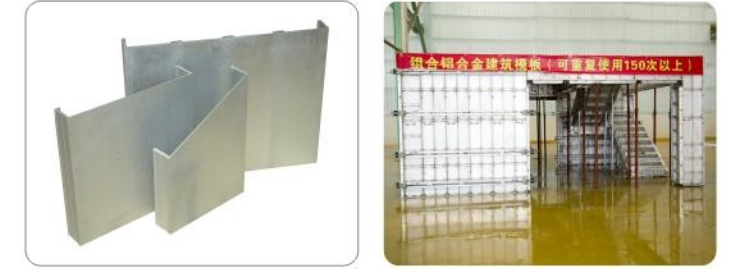
Profile for electronicaccessories



Profile for communication equipment



Profile for formwork system



Large section and special alloy profile

