



XX AXEL
D B D B

CONNECTING THE WORLD THROUGH
QUALITY AND TRUST





Axel Global Trading S.R.L

Axel Global Trading S.R.L, a Belgium-based company, is a rising leader in the international steel and metal markets, known for its reliability, quality, and delivery of high-grade industrial materials.

With strong partnerships across Europe and Turkey, we supply premium steel and metal products to industries such as construction, manufacturing, and heavy machinery. Our global network ensures cost-effective solutions and timely delivery to clients worldwide.

Axel connects businesses with top-tier materials, making us a trusted partner in driving industrial growth.



Strategic Partner for Precision and Growth

At Axel Global Trading S.R.L., we recognize that today's industries need more than just high-quality materials—they need a partner who can deliver precision, expertise, and tailored solutions. As a Belgium-based company with a global footprint, we specialize in providing steel and metal products designed to meet the specific demands of our clients across diverse industries.

Our strength lies in combining a deep understanding of regional markets with a clear grasp of global industry trends. This allows us to adapt our solutions to the unique needs of each client while ensuring consistency and reliability in every delivery. Whether it's sourcing the right materials or optimizing supply chains, our comprehensive knowledge ensures we deliver results that drive both efficiency and growth.

Our extensive product portfolio encompasses a diverse range of steel materials, including:

1

Starting and Raw Materials for Steel Production

2

Billets, Slabs, and Rebars

3

Steel Sheets and Plates

4

Hot Forged Steel Products

5

Hot Rolled Steel Products

6

Wire Rods and Wire Ropes

7

Welding Wires, Rods, Fluxes, and Fillers

8

Non-Ferrous Alloys, including Aluminum and Copper

1. Starting & Raw Materials

Direct Reduced Iron (DRI)

Direct Reduced Iron (DRI) is the product of the direct reduction of iron ore in the solid state using carbon monoxide and hydrogen derived from natural gas or coal. Direct Reduced Iron (DRI) is an intermediate product in the ironmaking process.

General specifications for DRI (ranges % by weight):

Parameter	Content
Fe Total (%)	86.1 - 93.5
Fe Metal (%)	81 - 87.9
MD (%)	91 - 93
C (%)	1 min
SiO ₂ (%)	4 max
Al ₂ O ₃ (%)	0.5 max
S (%)	0.008 max
P (%)	0.05 max
Size (mm)	9-18: 90%

Hot & Cold Briquetted Iron (HBI & CBI)

Hot Briquetted Iron is a premium form of DRI that has been compacted at a high temperature at time of compaction and has a density greater than DRI.

HBI was developed to address issues with shipping and handling DRI. The compaction process makes it less porous and significantly less reactive, reducing the risk of self-heating. Cold Briquetted Iron (CBI), on the other hand, is DRI molded at room temperature

General specifications for HBI & CBI (ranges % by weight):

Parameter	Content
Fe Total (%)	85 - 94
Fe Metal (%)	83 - 88.4
MD (%)	Min. 90
Carbon (%)	0.5 - 4
Sulfur (%)	< 0.04
Phosphorus (%)	< 0.1
Apparent Density (g/cm ³)	3.6 - 4.0
Bulk Density (g/cm ³)	Min. 2
Size (mm)	~ 25 x 35 x 45
Under Size < 5 mm (%)	3 - 5



Ferro Alloys

Item	Item Description
Ferro Silicon Magnesium	<p>Mg: 60% min Si: 14% min C: 3% max P: 0.3% max S: 0.05% min</p> <p>Size: 10-60 mm (90% min)</p>

Item	Item Description
Ferro Silicon	<p>Si: 72%, Al: 1.6% max C: 0.15% max P: 0.03% max S: 0.3% max</p> <p>Size: 10-60 mm (90% min)</p>

Coke

- CALCINED PETROLEUM COKE (CPC)
- CALCINED PITCH COKE (CPTC)
- CALCINED NEEDLE COKE
- CALCINED ANTHRACITE COAL (CAC)
- CARBON ANODES BLOCK
- GRAPHITIZED PETROLEUM COKE (GPC)
- FOUNDRY COKE
- METALLURGICAL COKE

Graphite Electrode

- RP Graphite Electrode Nominal Diameter: 70 – 800 mm
- HP Graphite Electrode Nominal Diameter: 100 – 800 mm
- UHP Graphite Electrode Nominal Diameter: 200 – 800 mm



2. Billets, Slabs & Rebars

Billets

All sizes and tolerances are negotiable.

1. Technical Details: Grade 5SP

C: 0.28 - 0.37%	Mn: 0.60 - 0.70%
Si: 0.15 - 0.30%	P: 0.04% max
S: 0.050% max	Cu: 0.40 max

2. Technical Details: Grade 4SP

C: 0.20 - 0.27%	Mn: 0.6 - 0.80
Si: 0.15 - 0.35%	P: 0.05% max
S: 0.05 max	Cu: 0.3% max

3. Technical Details: Grade 3SP

C: 0.14 - 0.22%	Mn: 0.60 - 0.70%
Si: 0.15 - 0.35%	P: 0.04% max
S: 0.05% max	Cu: 0.1% max
Ni: 0.2% max	Cr: 0.2% max

Dimensions & Tolerances

Cross Section (mm)	Length (mm)
130 x 130 140 x 140 150 x 150	6000 - 12000





Slabs

The ordinary grades are:

- G3101 SS 400
- G3106 SM 400A SAE 1008
- St 37-2
- St 44-3
- St 52-3
- 3SP
- 5SP
- ASTM A615 Gr.60
- STM A6572 Gr.50
- CK45
- 42CrMo4

Dimensions & Tolerances

Thickness (mm)	Width (mm)	Length (mm)
195 ± 5	1000 - 1250	3800 -
245 ± 5	± 10	10500 ± 100

Rebars

Rebar Mix, Standard Diameters & Masses

Diameter: 8 mm - 32 mm

3. Steel Sheets and Plates

We offer plates and sheets for various industries, with thicknesses ranging from 8 to 150 mm and widths up to 4500 mm.

Steel Plates for Shipbuilding



Steel Plates for Under Pressure Vessels and Tubes



Structural Steels



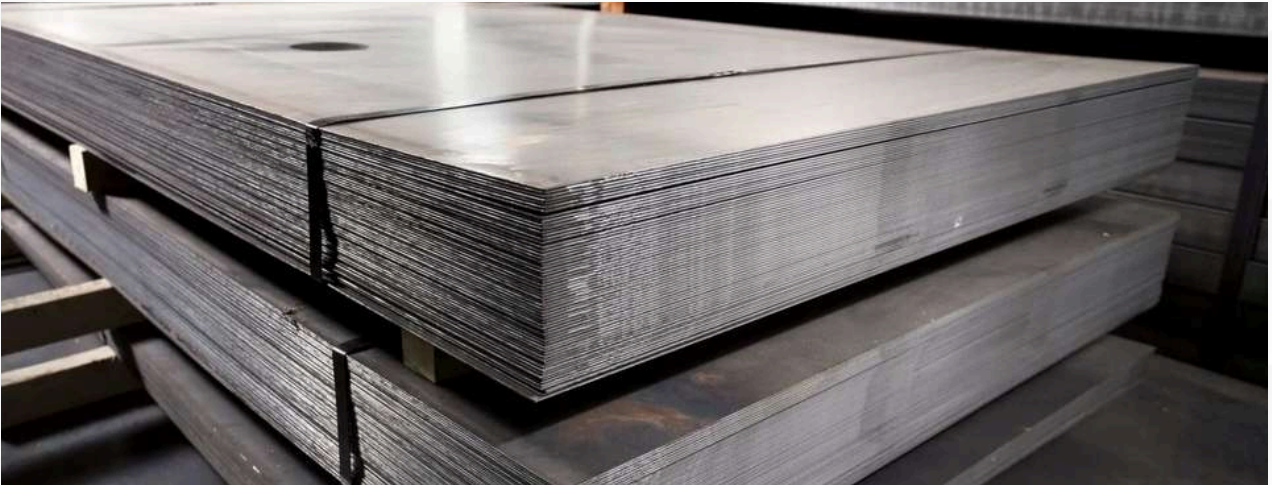
Galvanized and Color Steel Sheets

ROLL or SHEET

- Thickness: 0.12 – 5 mm
- Width: 90 – 1500 mm

PIPE

- Dimensions: 16 – 1020 mm (1/2 - 40 Inch)
- Length: 2000 - 16000 mm



4. Hot Forged Steel Products

Hot-forged alloyed steels are a category of steel materials that undergo a forging process at elevated temperatures to enhance their mechanical properties and performance.

Different shapes and sections are available for various industries, ranging from 100 mm to over 1000 mm. These heavy industrial parts and goods, made of steel alloys, are used in a variety of industries.



Iron and Steel Industries



Work Roll



Backup Roll



Hub



Half Coupling

Power Generation Industries



Thick Walled Pipes Heavy Ring



Rotor Shaft

Oil and Gas Industries



Gate Valve



Ball Valve



Adapeter



Solid Block Valve

Cement and Mining Industries



HPGR Tire



Crusher Main Shaft



Supporting Roller



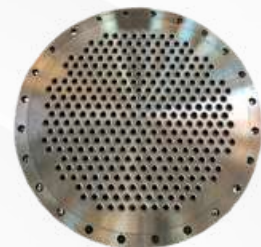
Spider

Other Industries

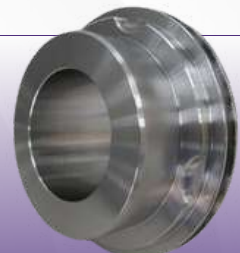


Shaft

Tube Sheet



Adaptor



5. Hot Rolled Steel Products

Hot Rolled Alloy Steels, essential for a diverse range of industries, including automotive, heavy machinery, and construction.

Bearing Steel



Gear Steel



Cold Heading Steel



Spring Steel



Alloyed Structural Steel



Welding Steel

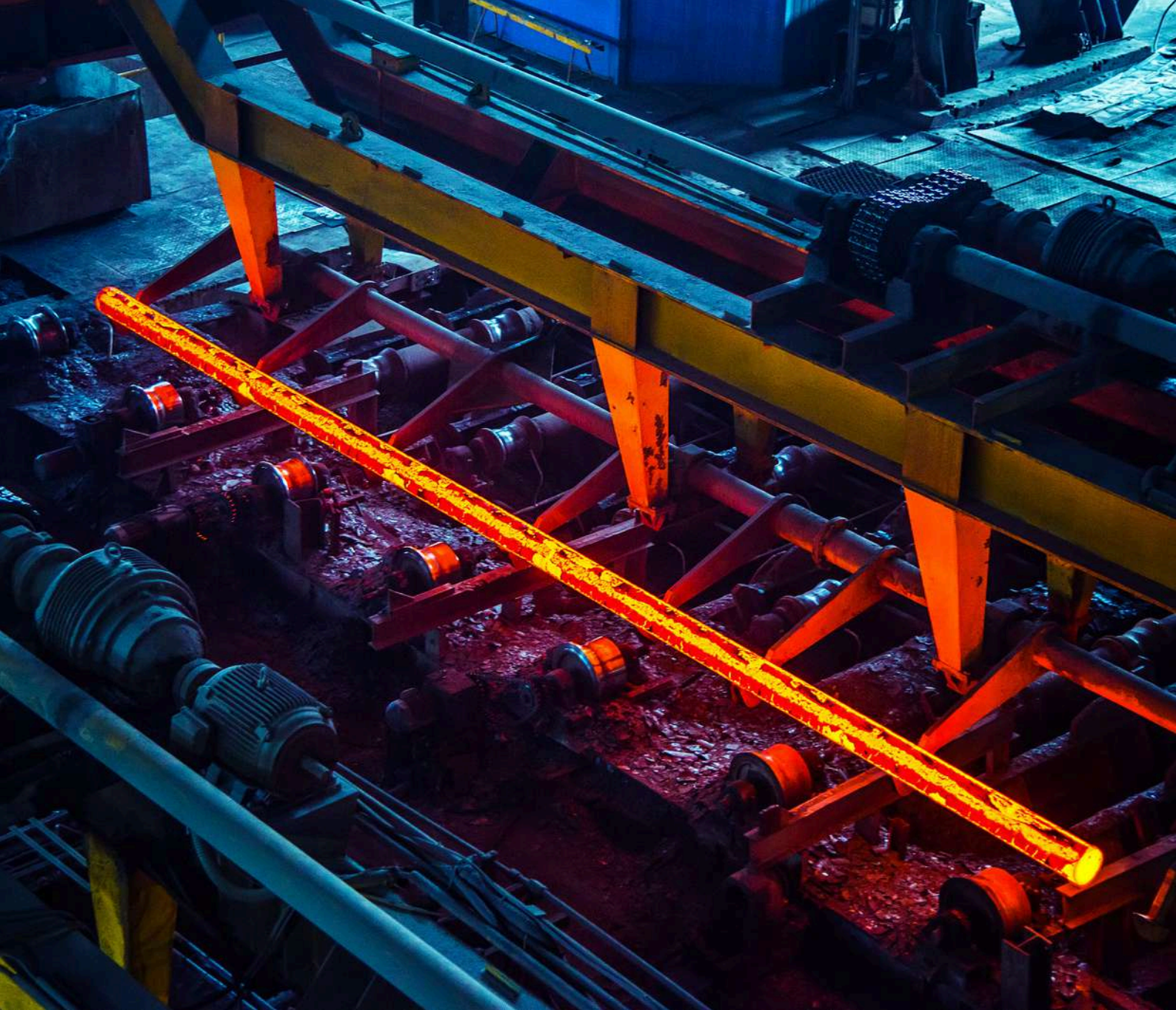


Tool Steel



Free Cutting Steel





Hot Rolled Alloy Steels for Diverse Industrial Needs

Available in a wide array of sections with diameters ranging from 10 mm to 200 mm, our Hot Rolled Alloy Steels are known for their superior strength and exceptional mechanical properties. These steels are perfect for applications requiring durability, toughness, and outstanding load-bearing capacity. The hot rolling process enhances the steel's workability, making it ideal for use in high-stress environments such as structural components, gears, and machine parts.

Manufactured in strict compliance with international standards, our Hot Rolled Alloy Steels ensure a reliable and consistent supply chain for industries across the globe. Their versatility makes them the preferred choice for both large-scale construction projects and intricate industrial applications.

6. Wire Rods & Wire Ropes

Wire Rods

Wire rods are a long steel product manufactured through hot rolling billets on continuous rolling mills. These versatile rods typically come in coils and have a wide range of diameters, typically between 5.5mm and 16mm. Wire rods serve as a critical raw material in various industries, including construction, automotive, and manufacturing.

Their primary use involves the production of wire, which can be further processed into a wide variety of products such as screws, bolts, wire mesh, springs, and even high-strength cables. Due to their strength, flexibility, and versatility, wire rods play a key role in reinforcing materials and components essential to modern infrastructure and industrial applications.

No	Grade	RM (MPa) For 5.5mm	C	Si	Mn	P (max)	S (max)
1	SAE 1006	max 370	max 0.08	max 0.15	0.30 - 0.70	0.025	0.025
2	SAE 1008	max 420	max 0.10	max 0.15	0.30 - 0.70	0.025	0.025
3	SAE 1010	max 440	max 0.12	max 0.15	0.30 - 0.70	0.025	0.025
4	SAE 1012	max 470	max 0.14	0.15 - 0.3	0.30 - 0.70	0.025	0.025
5	SAE 1015	max 540	max 0.18	0.15 - 0.3	0.30 - 0.70	0.025	0.025



Wire Ropes

Wire ropes play a major role in the marine industry, as well as in dredging, tower services, ship handling, and mooring, and they require special properties to meet these demands.

- 6x24 FC
- 6x36 WS + FC
- 6x41 WS + FC
- 6x36 WS + IWRC
- 6x41 WS + IWRC
- 6x24
- 7x7
- 7x19

Transmission Lines

We offer power transmission ropes. Based on its high-quality raw material & process & QC, offering high performance, corrosion resistance & high durable nature as the final features

- 6x19 M + FC
- 6x19 M + IWRC
- 6x36 WS + IWRC
- 6x36 WS + FC
- 6x37 WS + FC
- 6x37 WS + IWRC
- 1x7
- 1x19

Mining Shovel and Excavator

The heavy-duty use of wire ropes in the mining industry, including for draglines, excavators, and shovels in weight transmission, requires high performance and abrasion resistance. Our products meet world-class standards in the mining industry.

- 6x36 WS + FC
- 6x36 WS + IWRC
- 6x19 WS + IWRC
- 6x19 M + FC
- 8x36 WS + IWRC
- 8x31 WS + IWRC

Hoist, Cranes & Elevators

Elevators, cranes, and hoists require highly sensitive and high-performance characteristics in wire ropes, and our wire rope products meet all these requirements.

- 35x7
- 4x39
- 19x7
- 6x25 FW + IWRC
- 6x36 WS + IWRC
- 6x25 W + IWRC
- 8x19 S + FC
- 6x19 M + FC
- 6x19 M + FC

Building Industries

Applicable in cantilever bridges and tower cranes, the strength and durability of our strands and wire ropes rely on extensive experience and a professional team

- 7x7
- 7x37 7x19
- 1x7
- 1x91 1x61 1x19
- 8x31 WS + IWRC
- 6x19 F IWRC
- 6x31 FS + IWRC
- 6x26 WS + IWRC



Oil & Gas Industries

Land-based drilling is one of the biggest challenges in oil exploration and excavation. Wire ropes used in oil field drilling require a special kind of rope that meets API standard qualifications. Our wire ropes meet these API qualifications. The index tables present the minimum breaking load and nominal length masses of standard wire rope constructions used in the oil and gas industry.

- 6x31 WS + IWRC
- 6x26 WS + IWRC
- 6x36 WS + IWRC
- 6x19 S + IWRC
- 6x25 FW + IWRC
- 6x36 + IWRC & 8x36 + IWRC
- 6x19 + FC
- 6x7 + FC & 5x7 + FC

Low Carbon Galvanized Wire-Armor

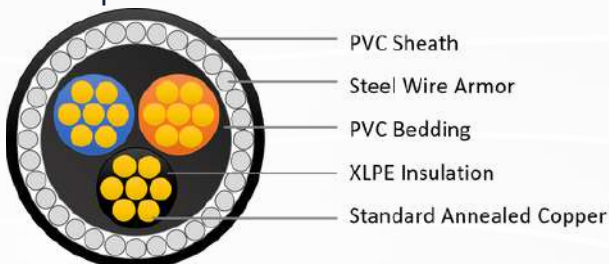
Zinc coated non-alloy steel wire for armoring cables:

Zinc coated steel wire is used primarily for the armoring of either subterranean land power or telecommunication cables to protect them from mechanical damage.

The characteristic of this product is:

- High corrosion resistance
- High formability due to enough flexibility

The application of this product is described in the picture below



Galfan (mischmetal Zn-5½ Al)

Galfan (mischmetal) is an alloy coating consisting of 5% aluminum and alkaline earth metals, applied to low and high carbon steel wire through a specialized process. The Galfan coating improves the corrosion resistance of steel to three times that of a standard galvanized (Zn) coating.

Advantageous:

1. Excellent ductility
2. Very high corrosion resistance
3. Ideal surface for paint and used without cover
4. Protection against excessive heating.

- Galfan Low Carbon Diameter: 1.0 - 5.0 mm
- Galfan High Carbon Diameter: 1.27 - 4.82 mm

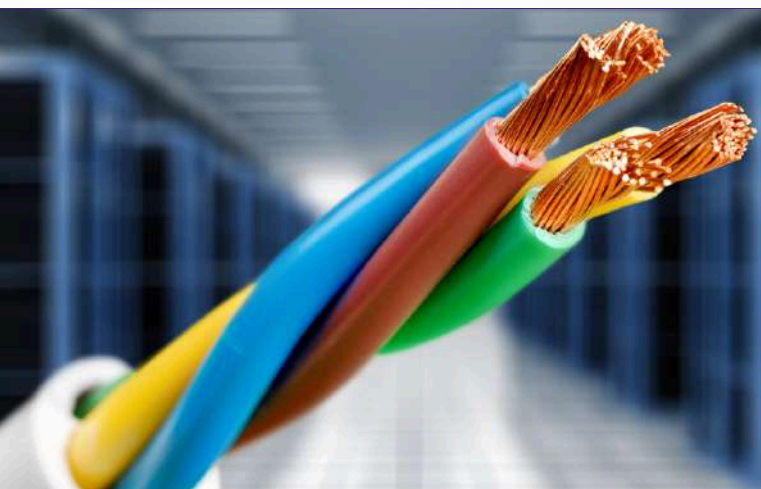
Straightened and Cut to Length Wire

The wires are straightened and cut to various lengths and diameters, and they are produced with two types of coatings: non-coated (black wire) and galvanized (Zn-coated)

- Wire Diameter: 2.50 - 3.50 mm
- Length: 250 - 710 mm



3D Panels



Low Carbon Galvanized Wire

Due to sufficient flexibility and formability of low carbon galvanized steel wire a wide range of application for this product is available on the other hand zinc coating makes enough corrosion resistance and applicable in the area when high corrosion resistance requested.

- Diameter: 1.85 - 6.00 mm

Steel Wire for Mechanical Spring

The spring wire is hard drawn and can be delivered in a bright-drawn, black, or coated condition depending on the request. Various mechanical springs, such as torsion springs or spring belts, can be produced from this wire.

- Wire Diameter: 0.5 - 5.0 mm

High Carbon Galvanized Steel Wire-ACSR (Single wire and standard)

Due to the high capacity and strength of high carbon galvanized steel wire, it is used as a steel core for conductor reinforcement in Aluminum Conductor Steel Reinforced (ACSR). These wires can be used in two different forms: single wire and stranded wire. The technical properties vary depending on the application, such as in high-voltage transmission lines, telecommunications cables, and the agricultural industry.

- Single Wire Diameter: 1.4 - 4.8 mm

Steel Fiber for Concrete Reinforcement

Steel fibers are filaments of wire deformed and cut to lengths for reinforcement of concrete it is a cold drawn wire fiber with hooked ends.

- Diameter: 0.6 - 1.2 mm
- Length: 30, 50, 60 mm
- Package: 15 kg/packet



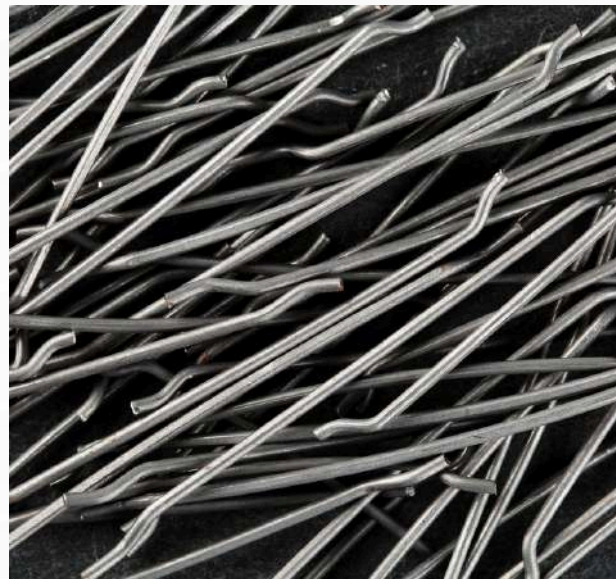
Double hook ended



Corrugated steel fiber



Glued steel fiber



Bead Wire

- Base Material: High Carbon Strand Wire
- Diameter: 0.78 - 1.83 mm



7. Welding Wires, Rods, Fluxes & Fillers

Welding Wire MIG/MAG

Welding wires are copper-free Mn-Si alloyed ER70S-6, G3Si1 solid wire for GMAW.

Key features include excellent starting properties, trouble-free feeding at high speeds and over long feed distances, a very stable arc at high welding currents, extremely low levels of spatter, low fume emissions, reduced contact tip wear, and improved protection against corrosion of the wire.

- Wire Diameter: 0.8 - 1.6 mm



Copper Coated Solid Rod (For GTAW)

Welding rods are copper-coated Mn-Si alloyed ER70S-6 (W35Si1) solid rods used for the GTAW of non-alloyed steel with a tensile strength of up to 540 MPa. Characteristic features include a smooth bead appearance.

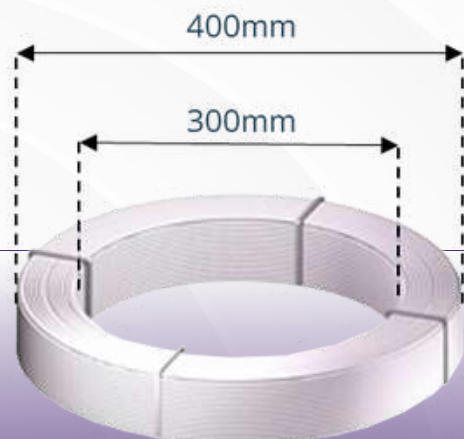
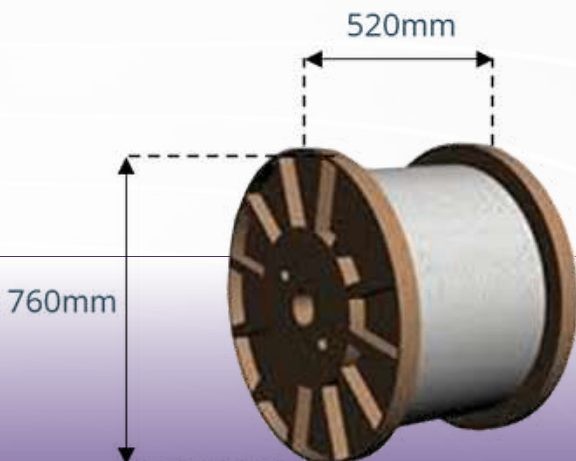
- Diameter: 1.6, 2.0, 2.4, 3.2 mm

Zinc Electrode Posited Wire

Zinc electrode posited wires produced electrically in ambient temperature without need to molten zinc. Some spectacular characteristics of the wire industry zinc electrode posited wires are as follows.

1. Different steel wires grades of coating in wide range of diameter (0.4-2.5mm)
2. Production of zinc electrode posited wires with low coating thickness with decorative purposes and high coating thickness with long time corrosion resistance purposes.
3. Adequate corrosion resistance for special application in comparison to hot dipped galvanized wires.

It is possible to produce other quantities of coating on customer's order.



Welding Fluxes

- PRE-MIXED WELDING FLUXES
- JR9
- JR8
- JFB
- JCS
- JAB-23
- S.A.W WIRES
- G3Si1 (SG2)
- G4Si1 (SG3)
- J.ER 70S-6



Electrode

- Rutile Coated Electrodes, Unalloyed
- Rutile High Recovery Electrode
- Basic Electrodes, Unalloyed
- Cellulose Coated Electrodes
- Electrodes For Fine Grain Structural Steels And Special-Purpose Structural Steels
- High Temperature Basic And Rutile Coated Electrodes
- Electrodes For Hardfacing Application
- Electrode For Welding Cast Iron
- Electrodes For Stainless And Heat Resisting Steels



8. Non Ferrous Alloys

Aluminium Alloys Products

Most aluminum and aluminum alloy products are available, such as ingots, rods, plates, flats, tubes, and coils, in the most important aluminum alloy grades.

Rod

- Diameter: 5 - 650 mm
- Length: 100 - 12000 mm

Flat, Plate and Coil

- Thickness: 0.1 – 400 mm
- Width: 20 – 3000 mm
- Length: 100 – 12000 mm

Tube

- Wall Thickness: 0.4 – 20 mm
- Outer Diameter: 10 – 2500 mm
- Length: 50 - 12000 mm



Copper Alloys Products

Most copper and copper alloy products, such as rods, plates, flats, tubes, and coils, are available in the most important copper alloy grades.

Rod

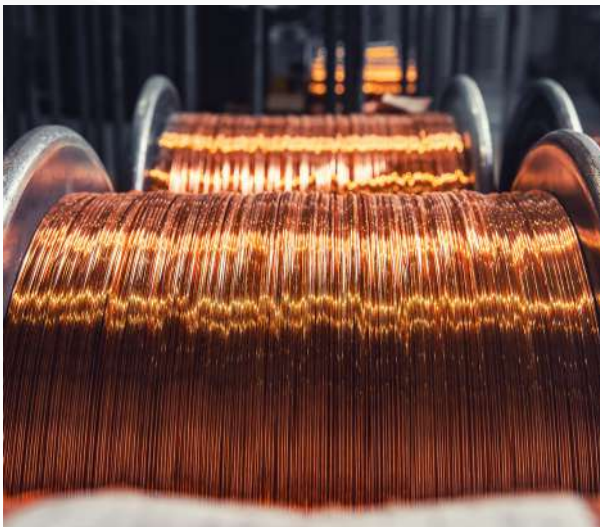
- Diameter: 2 - 800 mm
- Length: 2000 - 6000 mm

Flat, Plate and Coil

- Thickness: 0.1 – 300 mm
- Width: 10 – 3000 mm
- Length: 100 – 12000 mm

Tube (Round or Rectangular)

- Wall Thickness: 0.2 – 120 mm
- Outer Diameter: 2 – 910 mm
- Length: 3000 - 12000 mm



Industrial Equipment Solutions

Axel Global Trading specializes in providing essential, high-performance machinery for the steel production industry, catering to a wide range of industrial needs. Our offerings include advanced mixers, precision milling machines, robust power equipment, and reliable pumps, all designed to withstand the rigorous demands of steel manufacturing. With a commitment to delivering top-quality solutions, Axel Global Trading stands as a trusted partner in helping you achieve success in even the most challenging industrial environments.



Our Expertise

Global Knowledge

Our experience in international markets enables us to navigate complex logistics, ensuring smooth and efficient delivery of high-quality materials worldwide.

1

Broad Product Range

We supply a wide variety of steel products and industrial equipment to meet diverse industry needs.

2

Customized Solutions

We deliver tailored products and services to match each project's unique requirements.

3

Quality Assurance

Our strict quality controls ensure reliable, top-tier products that meet international standards.

4

Contact Information

AXEL GLOBAL TRADING

Call on:

+ 32 472 64 84 27

Mail us on:

info@axelglobal.be

Sales Mail:

sales@axelglobal.be

Office Address:

Rue de Bois de Breux 116, 4020 Liège, Belgium



WE DRIVE INNOVATION, QUALITY, AND
RELIABILITY IN GLOBAL TRADE,
CONNECTING THE STEEL INDUSTRY
WORLDWIDE WITH PREMIUM PRODUCTS



AXEL GLOBAL TRADING S.R.L, A BELGIUM-BASED COMPANY, IS A RISING LEADER IN THE INTERNATIONAL STEEL AND METAL MARKETS, KNOWN FOR ITS RELIABILITY, QUALITY, AND DELIVERY OF HIGH-GRADE INDUSTRIAL MATERIALS. WITH STRONG PARTNERSHIPS ACROSS EUROPE AND TURKEY, WE SUPPLY PREMIUM STEEL AND METAL PRODUCTS TO INDUSTRIES SUCH AS CONSTRUCTION, MANUFACTURING, AND HEAVY MACHINERY. OUR GLOBAL NETWORK ENSURES COST-EFFECTIVE SOLUTIONS AND TIMELY DELIVERY TO CLIENTS WORLDWIDE. AXEL CONNECTS BUSINESSES WITH TOP-TIER MATERIALS, MAKING US A TRUSTED PARTNER IN DRIVING INDUSTRIAL GROWTH.